

# Opportunities for early career researchers

Rachel Tyrrell, Policy and Resources Directorate



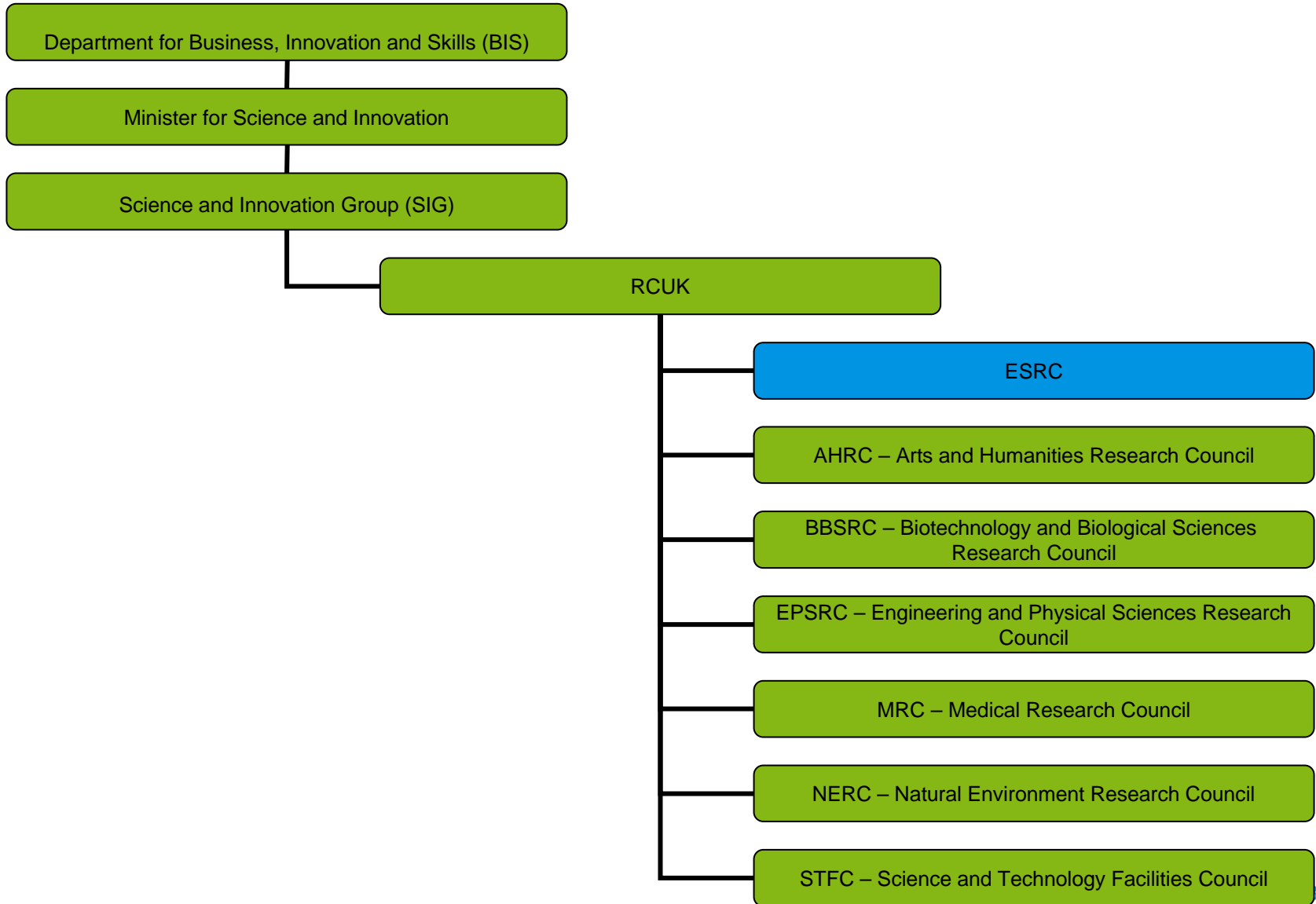
# ESRC in Context

- The Economic and Social Research Council (ESRC) is a non-departmental public body principally funded through the Department for Business, Innovation and Skills (BIS)
- Committed to enabling UK social scientists to collaborate with the best researchers across the globe

## **International strategy aims:**

- To enhance capacities for leading edge international research
- To remove barriers to trans-national research collaborations
- Further information available at [www.esrcsocietytoday.ac.uk](http://www.esrcsocietytoday.ac.uk)

# UK Research Councils



# ESRC Principles

A vertical decorative bar on the left side of the slide, composed of several horizontal segments in shades of orange, yellow, green, light blue, and dark blue.

## Impact

## Quality

## Independence

Impact

Ensuring that our activities contribute fully to economic development and improved quality of life

Quality

Funding research and training of the highest quality by world standards

Independence

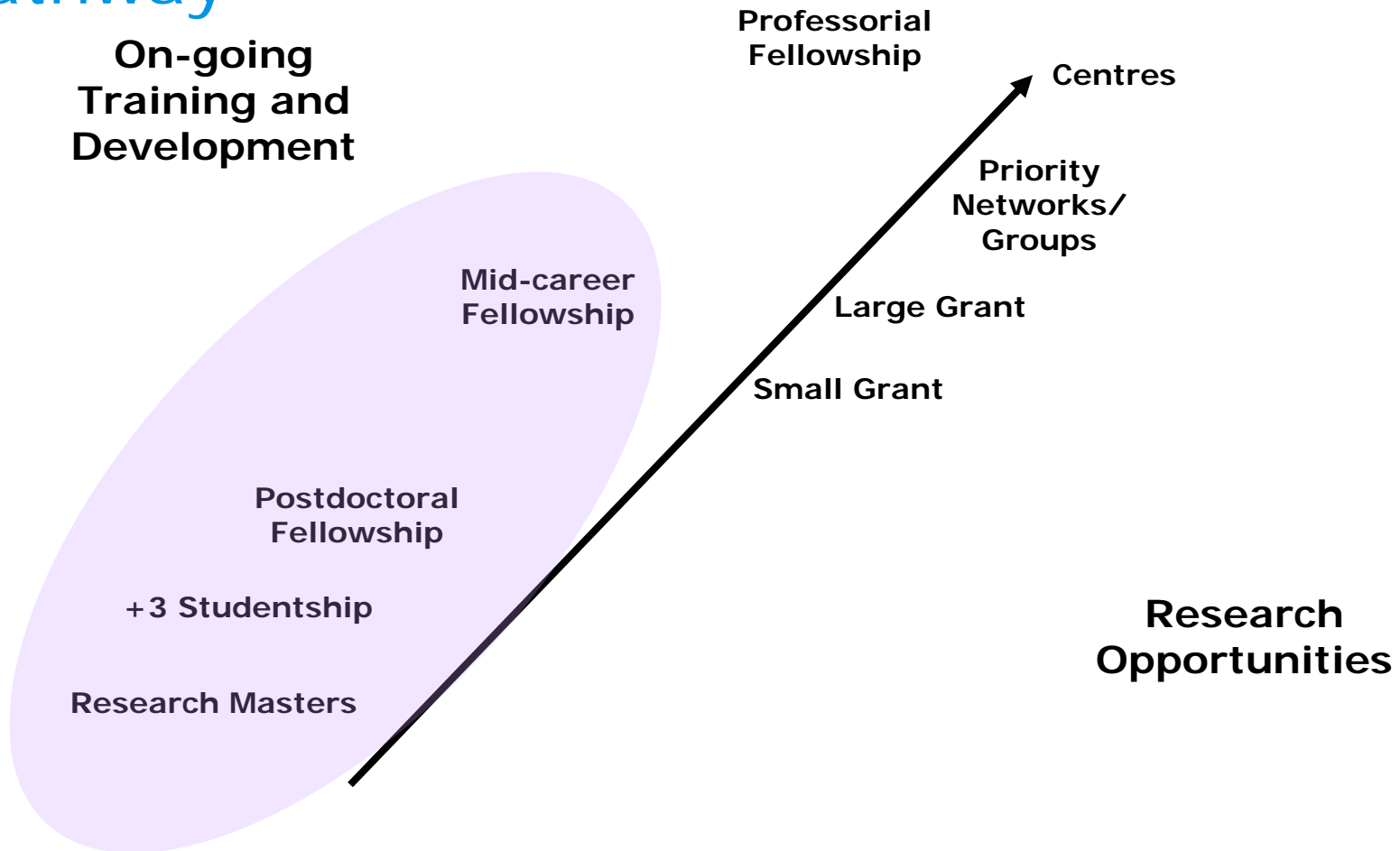
Ensuring independence from political, commercial or sectional interests

# Impact: the principal objective

Maximising the impact of our work through excellence:

- Academic impact
- Societal impact
- Economic impact
- Policy impact

# Research Careers – ESRC Funding Pathway



# ESRC Postdoctoral Fellowships

- Scheme aims to identify, recruit AND retain the best new research talent by supporting their career development (20-25% success rate)
- Awards are tenable for one year on a full time basis; two years for Economics
- Awards are designed to enable publication, dissemination and further training, although limited new research is permitted
- Applicants should have no more than three years' active postdoctoral experience when they take up the award

# ESRC Mid-Career Development Fellowships

- Scheme aims to enable outstanding researchers to develop their careers by taking their research in a new direction or to a new level
- Awards are tenable for two years
- Applications are welcome from researchers seeking support for a programme of work linked to substantive career development
- Interdisciplinary research is particularly encouraged
- Applicants should have between five and fifteen years' active research experience

# ESRC Research Grants Scheme

- Responsive mode system includes small grants up to £100,000; standard grants up to £1.5million
- Open dates scheme – applications can be made at any time. Current success rates are approximately 15-20%
- Funding decisions based on scientific quality, timeliness, track record and value for money
- Encourages proposals that include talented new researchers and international co-investigators
- Schemes aim to support a range of projects of the highest quality. Greater emphasis on innovative and interdisciplinary work

# International Opportunities

- ESRC is committed to helping UK researchers to overcome barriers to international collaborative research. ESRC has bilateral agreements with research funding agencies in several countries, including Australia, Austria, Finland, France, Germany, Hong Kong, Iceland, Ireland, Netherlands, South Africa and Sweden.
- Some examples of current opportunities are:
  - Call for Visiting Scholars from South Asia and the Middle East. Call closes 4pm Thursday 3 December 2009
  - Call for Visiting Scholars from the Americas (N,S, Central and Caribbean). Call expected to open Mid-Dec 2009
- Further information is available at:  
<http://www.esrcsocietytoday.ac.uk/ESRCInfoCentre/opportunities/international/index.aspx>