

Mapping a Network Printer in Mac OS X 10.6 Snow Leopard

with Duplex Functionality

provided by Dennis-Jonathan Mann, SPS

The procedure described below has been verified using Mac OS X 10.6 (Snow Leopard).

1. Download the latest Ricoh drivers from the Apple website.

http://support.apple.com/downloads/Ricoh_Printer_Drivers_for_Mac_OS_X_v10_6
(OS X 10.6)

<http://support.apple.com/kb/DL186>
(OS X 10.5) (not tested!)



Ricoh Printer Drivers for Mac OS X v10.6



About Ricoh Printer Drivers for Mac OS X v10.6

This download includes Ricoh printing software that shipped with Mac OS X v10.6 (Snow Leopard).

For information about supported printer models, see: <http://support.apple.com/kb/HT3669>

Download

Version: 2.0

Post Date: August 27, 2009

Download ID: DL902

File Size: 21.2MB

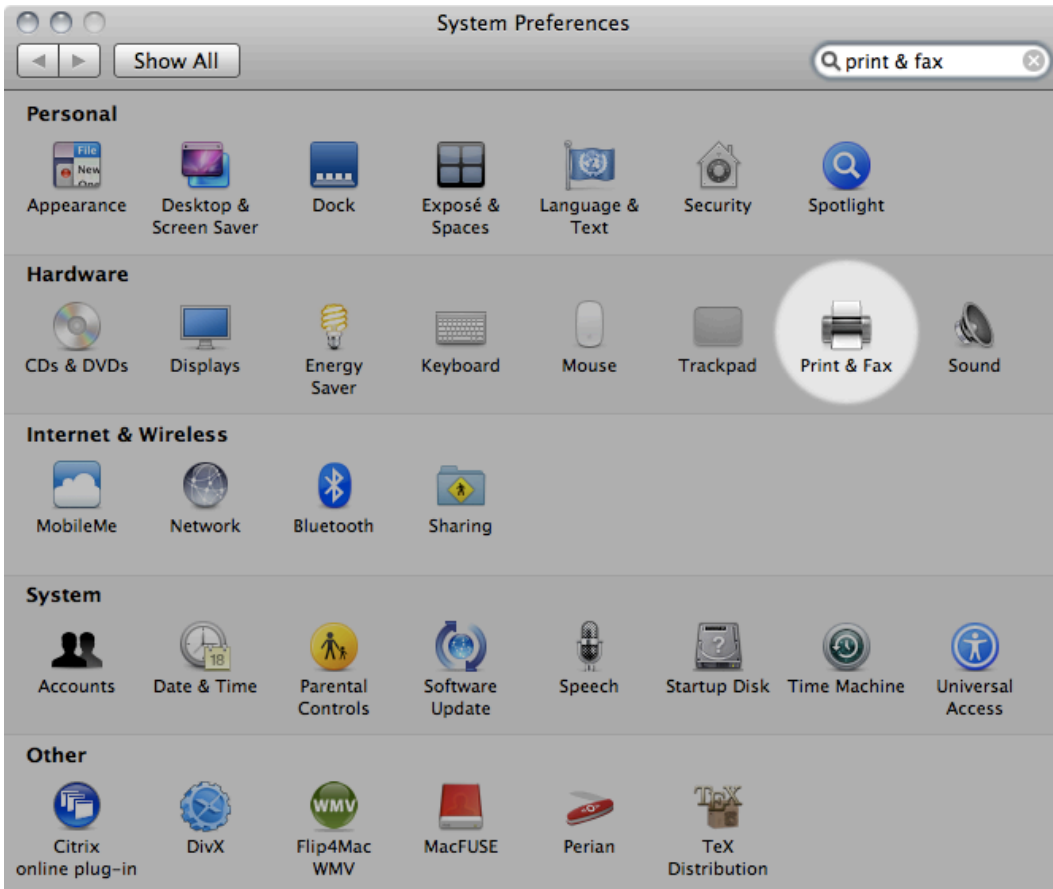
System Requirements

- Mac OS X 10.6

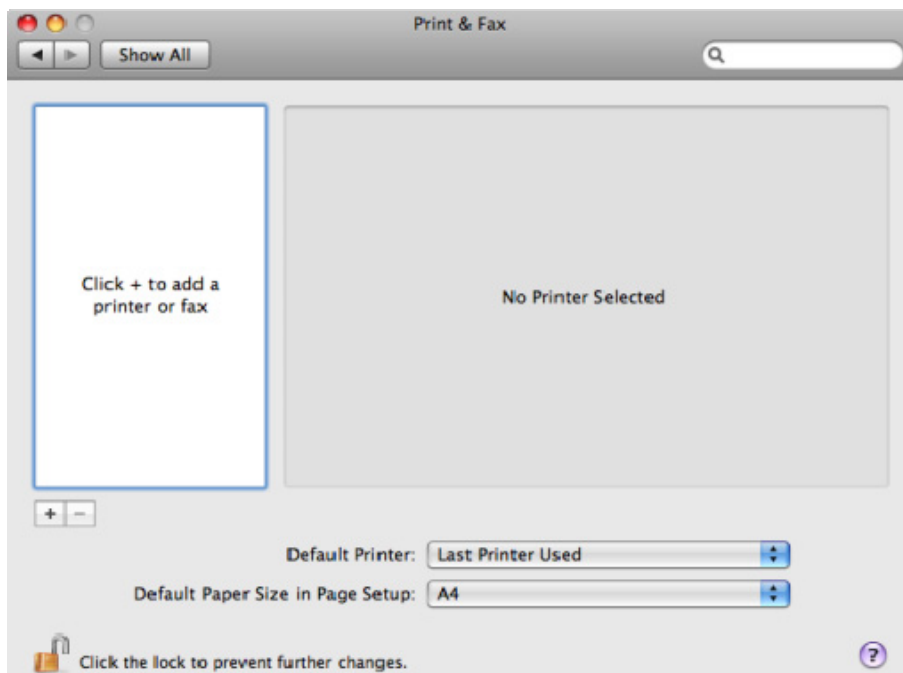
Supported Languages

- Deutsch
- English

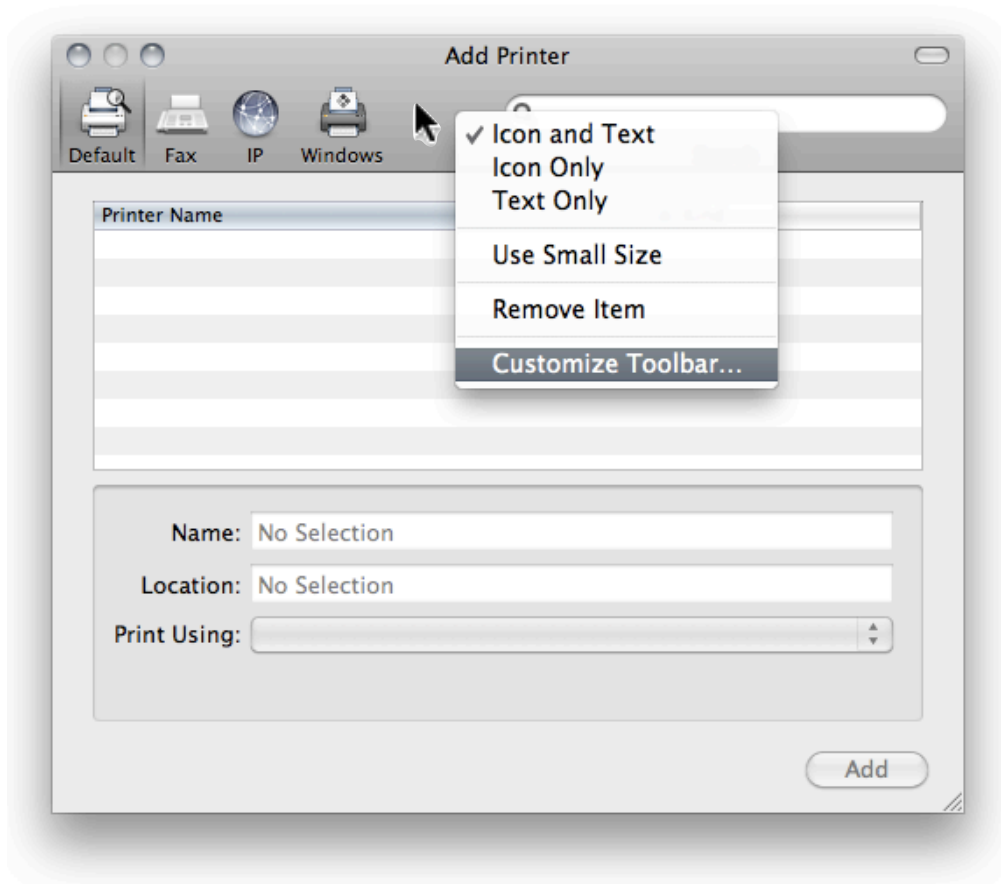
2. Select "Print & Fax" in the Hardware section of the System Preferences



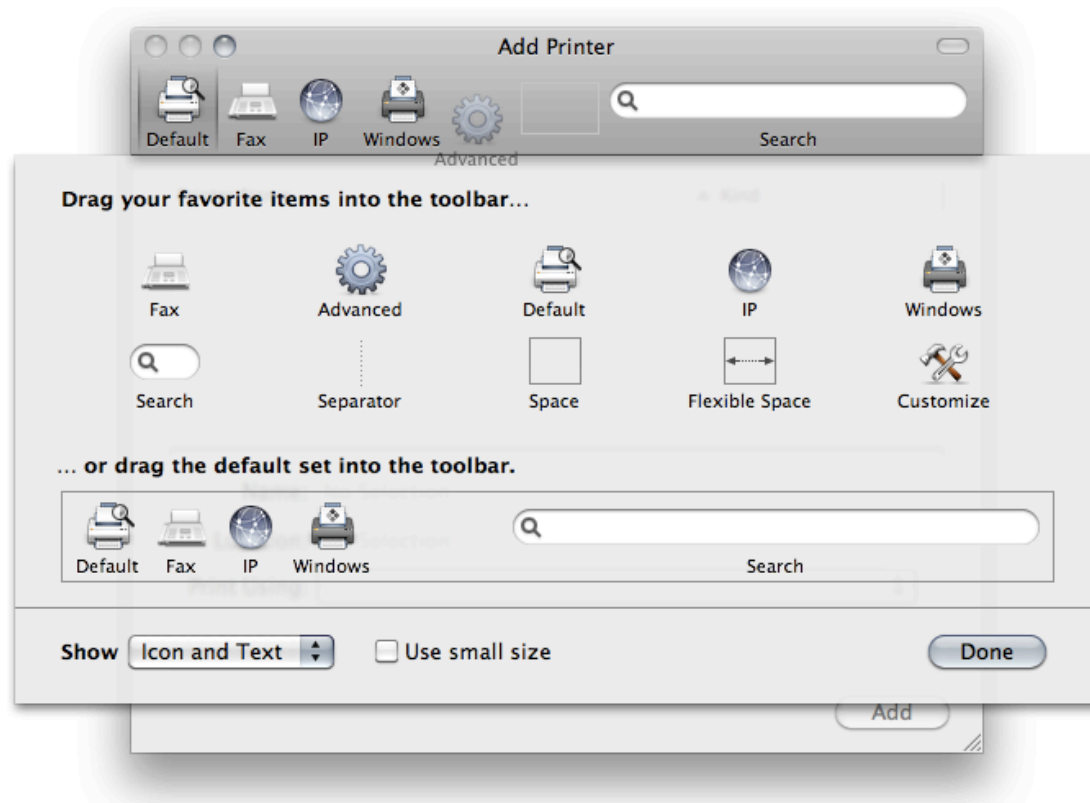
3. Click the '+' symbol to add a printer



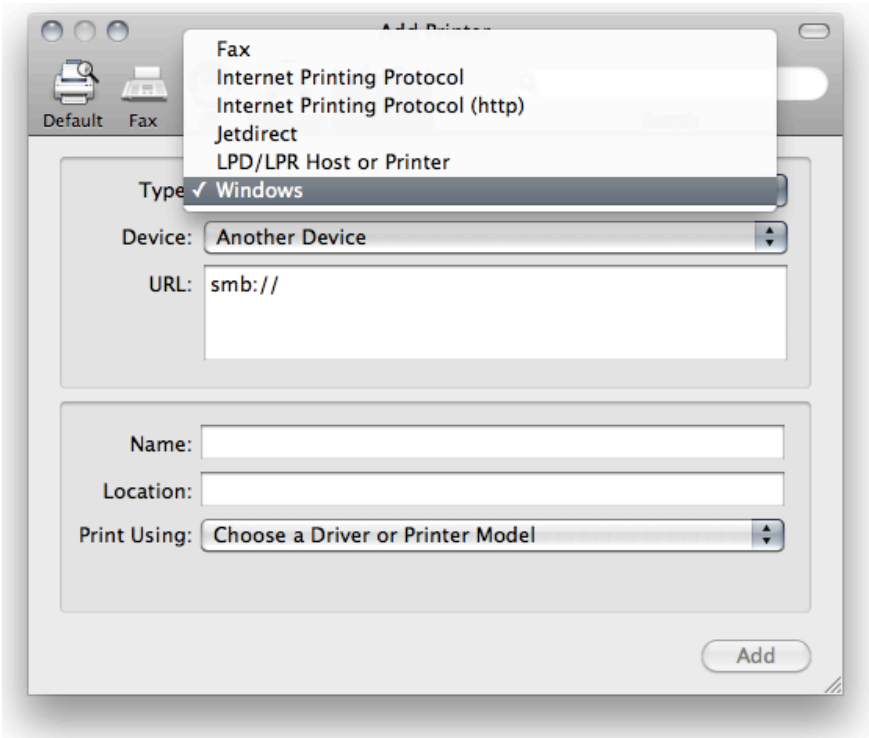
4. Move cursor to a place on the toolbar *without* an icon, then right-click (or click + alt). Choose “Customize Toolbar”



5. Drag “Advanced” icon into the toolbar

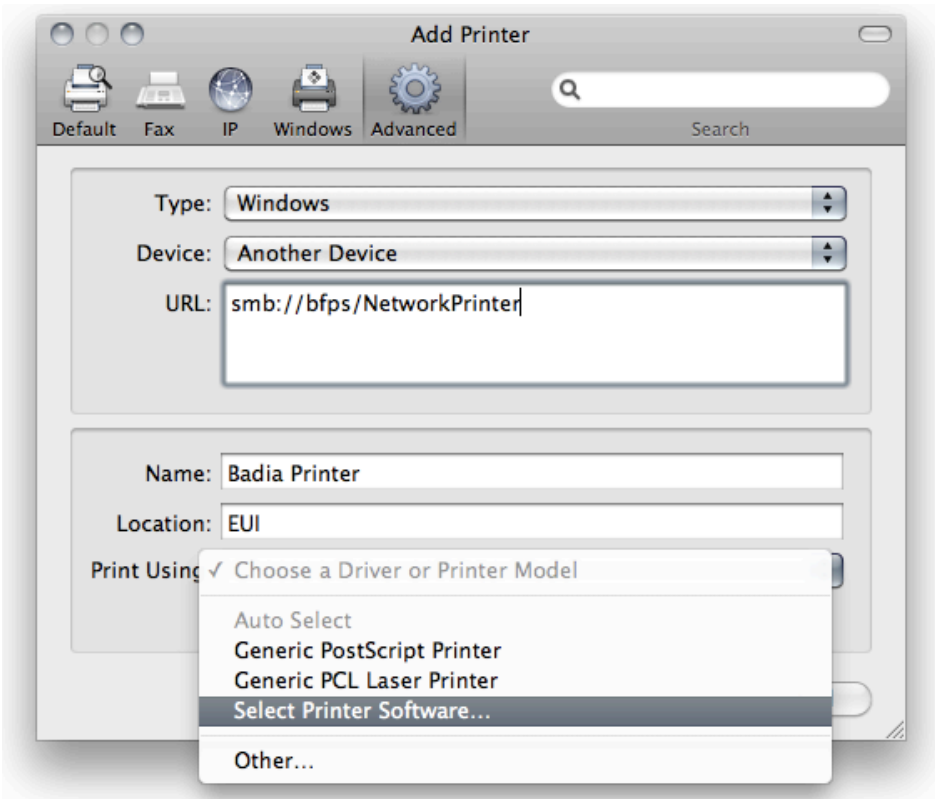


6. Click on “Advanced” icon, set Type to “Windows”

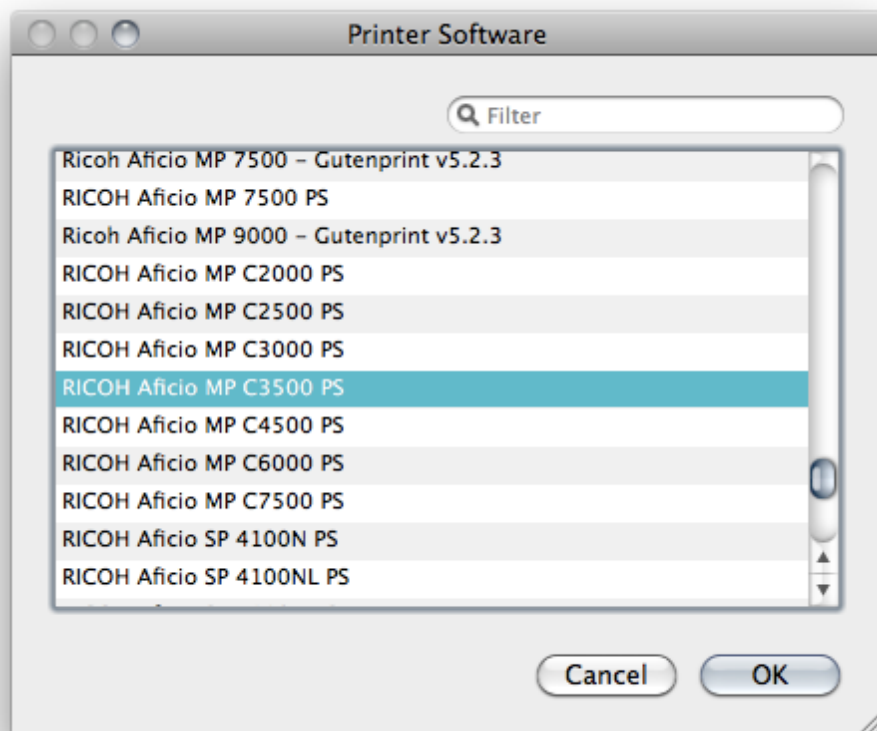


7. Copy and paste printer path (from intranet), add smb:// and correct \ to /
<http://www.eui.eu/ServicesAndAdmin/LogisticsService/NetworkPrinters/PrinterPaths.aspx>

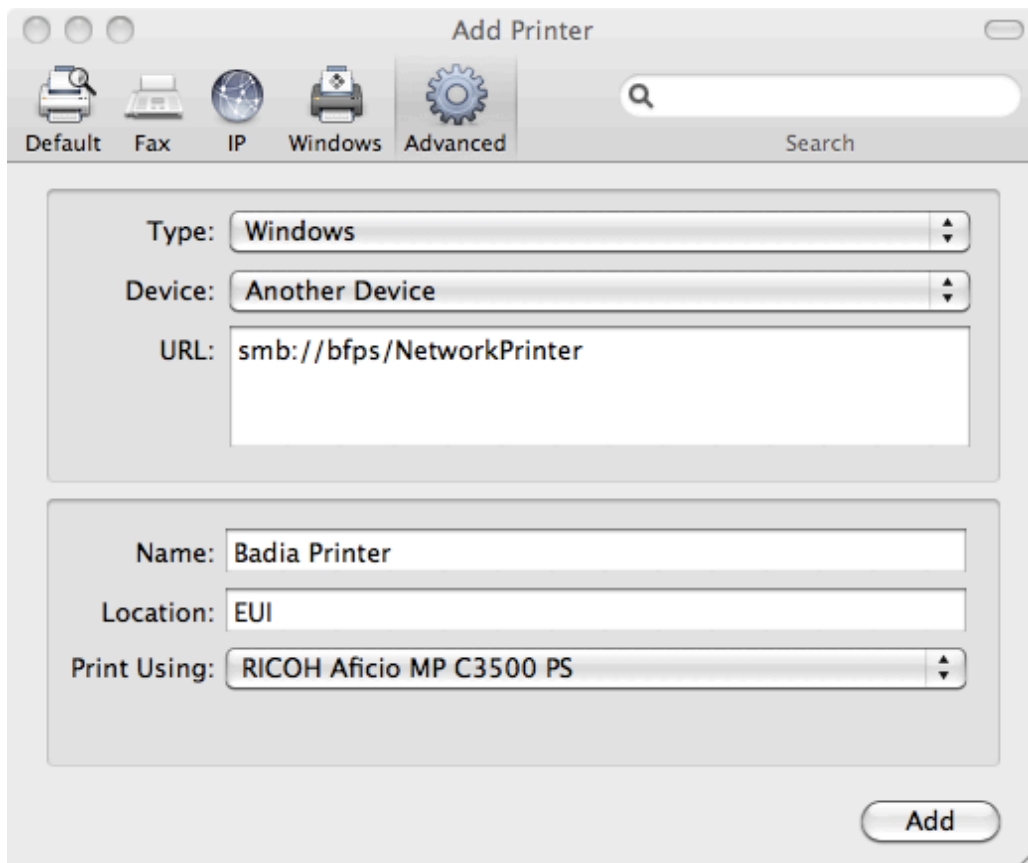
- \\spps\NetworkPrinter (San Paolo PrintServer) → **smb://spps/NetworkPrinter**
 - \\bfps\NetworkPrinter (Badia Fiesolana PrintServer) → **smb://bfps/NetworkPrinter**
 - \\vpps\NetworkPrinter (Villa Il Poggiolo PrintServer) → **smb://vpps/NetworkPrinter**
- [Here, the Badia printer will be used exemplarily]



8. Select “RICOH Aficio MP C3500 PS” driver to enable double-sided printing



9. Again check details and then press “Add” button to complete installation

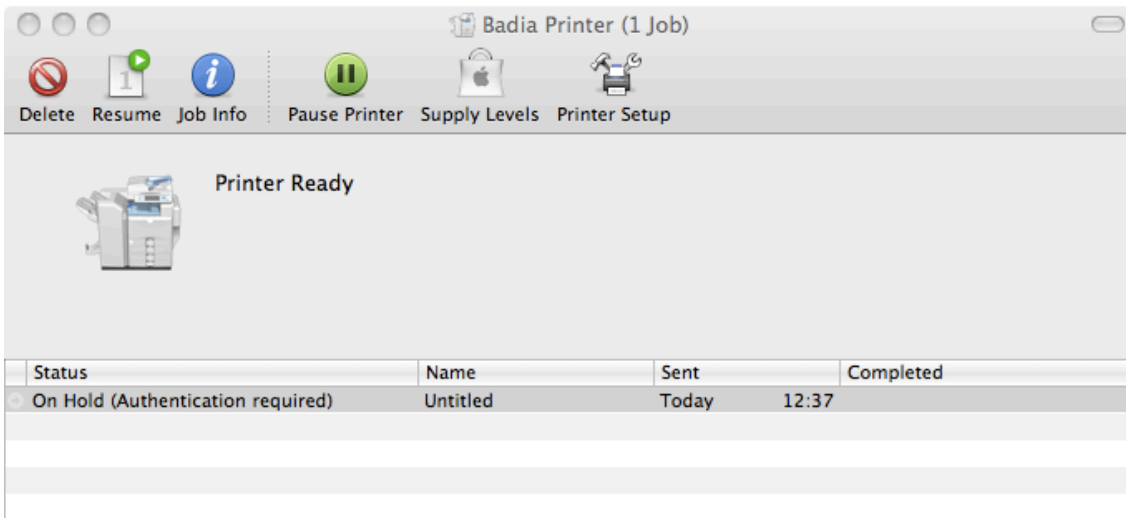


10. First print job

Send a printout from any application.

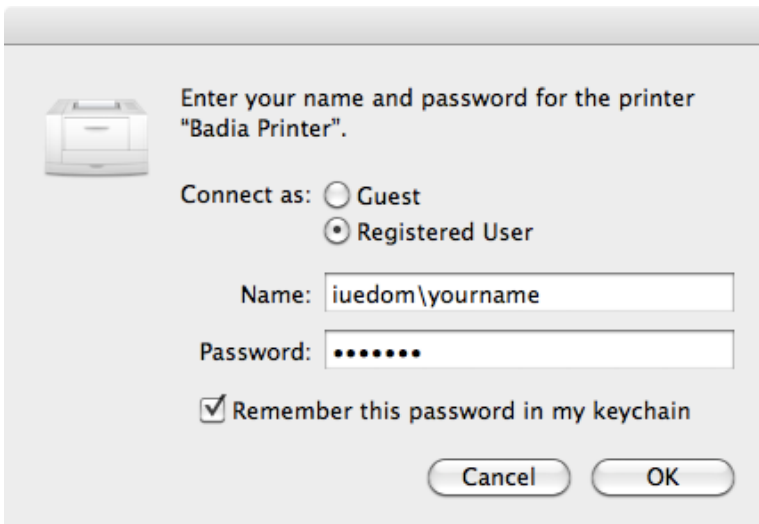
At the first print job (or after you have changed your EUI password) your print job will stay in the "Print Queue", indicating that "Authetification is required" (or "Authentication has failed").

To (re-)authenticate, press the "Resume" button.



Your username and password will (again) be requested. Enter them exactly as shown in the figure, including the domain (iuedom\). Be sure to select the option "Remember this password in my keychain".

[Hint: A backslash (\) can be obtained on a Mac by pressing "7" while holding down "shift + alt"]



For any further details or for assistance, please visit the [Service Points for Laptops](#) which can be contacted as well at the following e-mail address: laptopsupport@eui.eu.