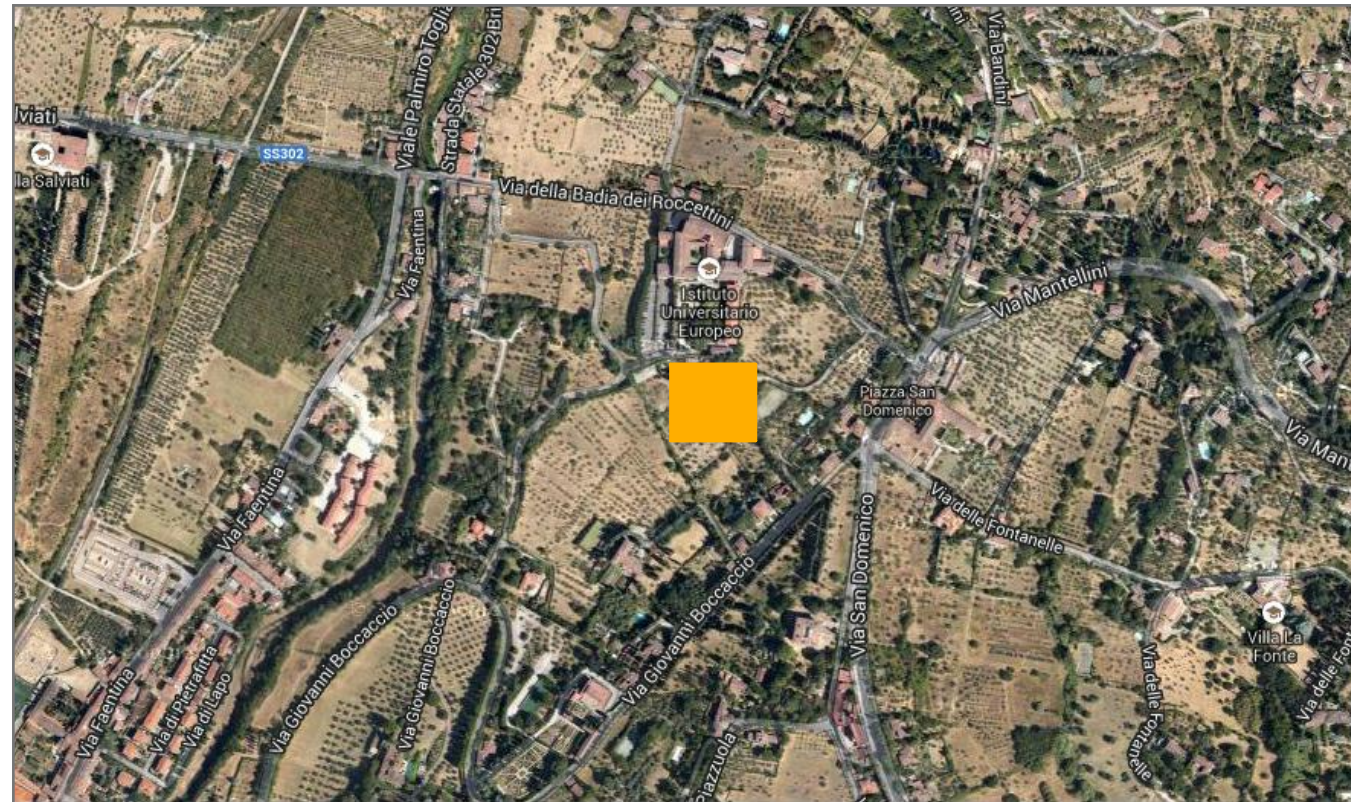


European University Institute

ALLEGATO H.



Legenda:

APPARTAMENTO	LOCALE TECNICO	TOILET	AREE ASFALTATE & GHIAIA
AULA STUDIO	MAGAZZINO	UFFICIO	AREE ESTERNE PAVIMENTATE
BAR & MENSA	SALA COMUNE	ZONA DI PASSAGGIO	AREE VERDI
CUCINA			

Identificativo immobile:

Villa Paola

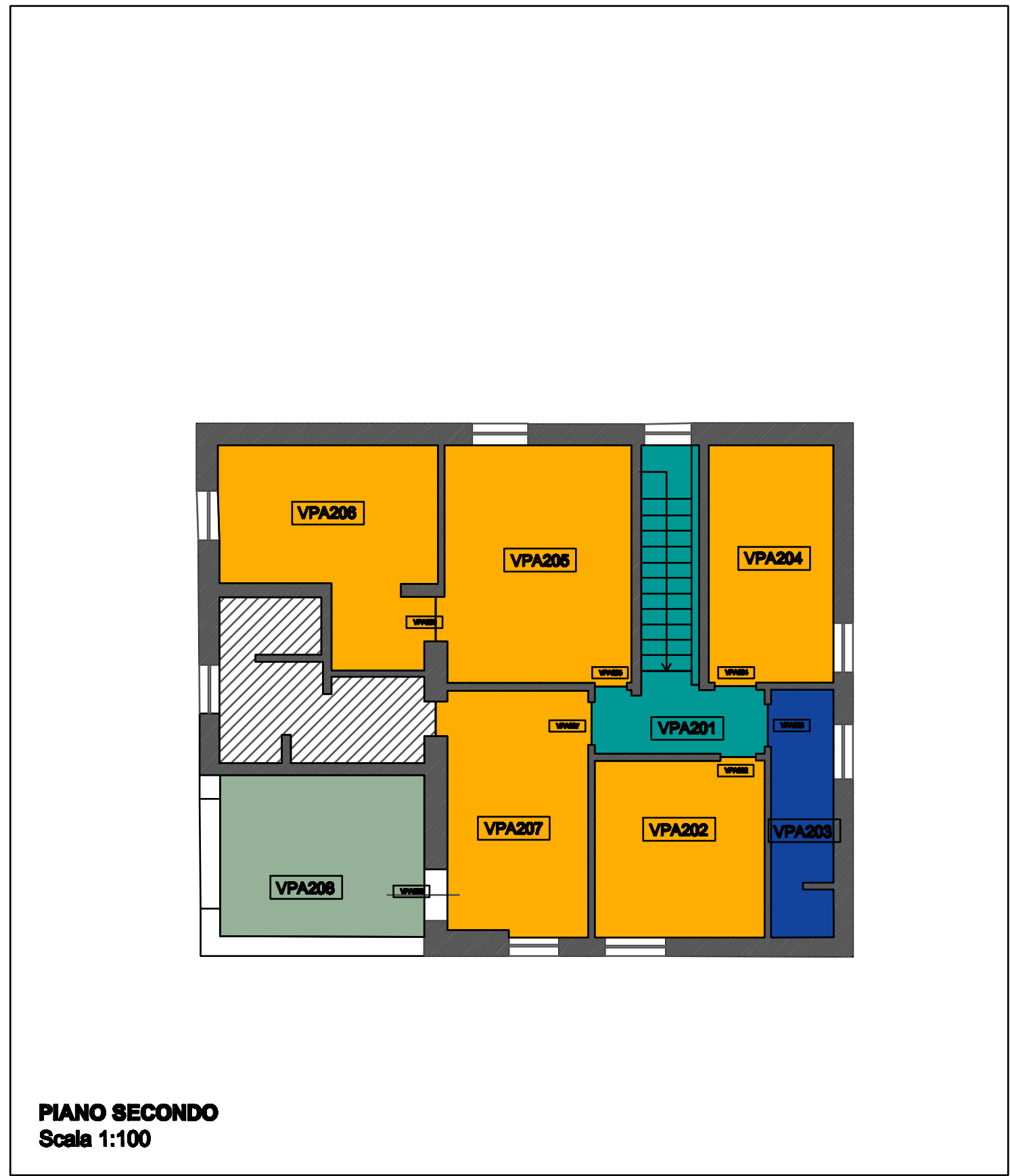
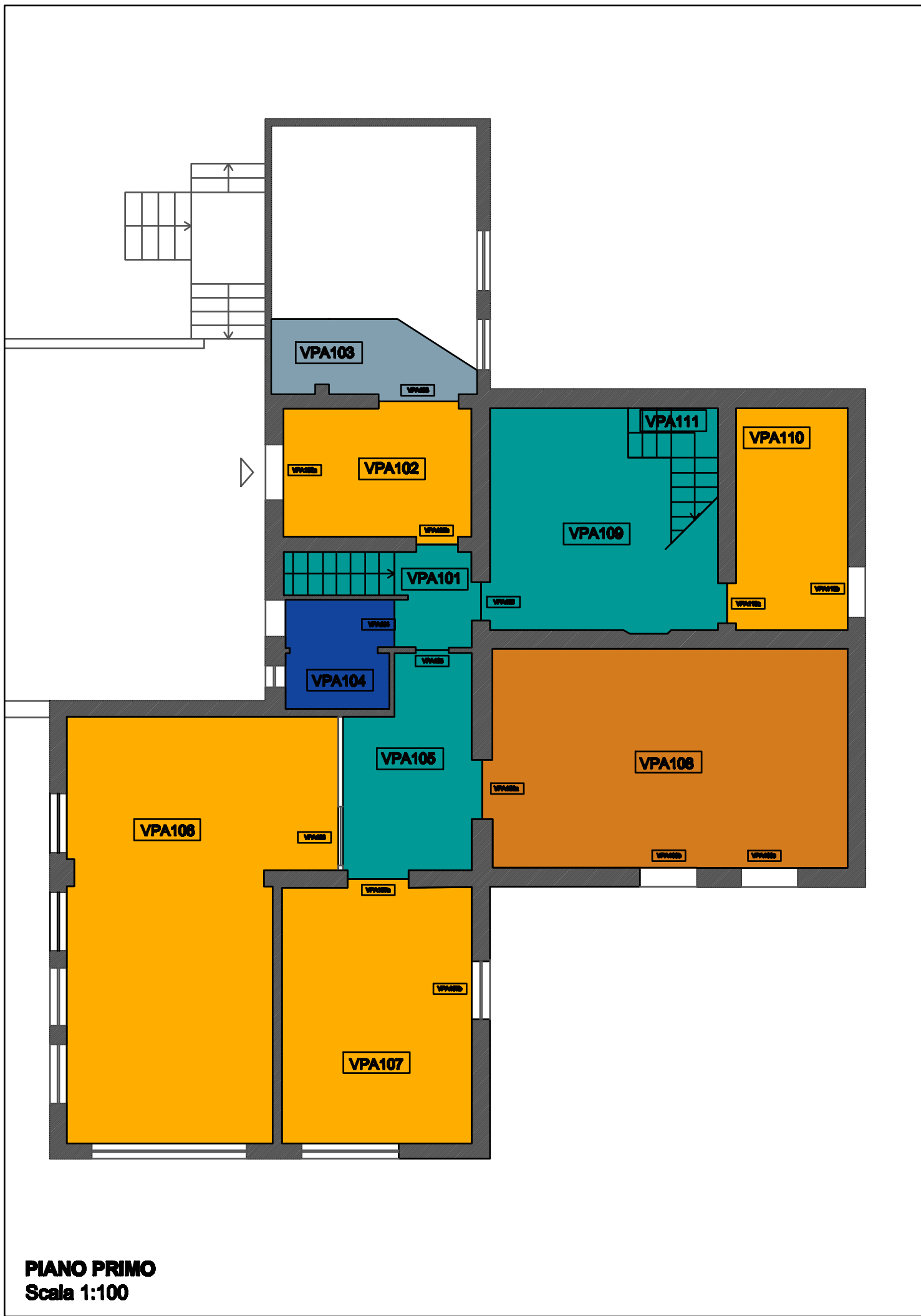
via de' Roccettini, 50014 San Domenico, Fiesole

Piano: Piano Terra, Primo Piano, Piano Secondo.








VPA

16/09/2013





Legenda:

	MAGAZZINO		SALA COMUNE		UFFICIO		AREE ESTERNE PAVIMENTATE
	LOCALE TECNICO		TOILET		ZONA DI PASSAGGIO		