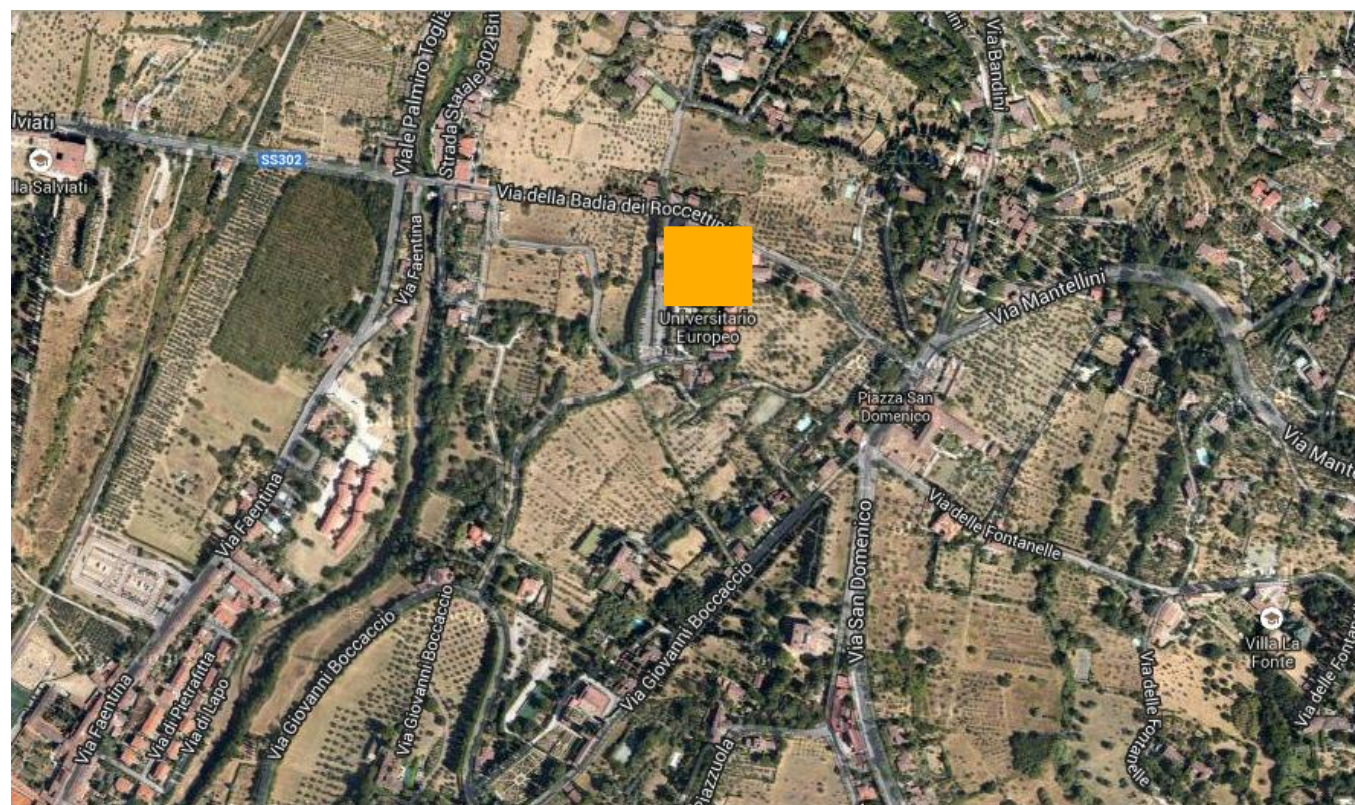


European University Institute

ALLEGATO H.



Legenda:

 APPARTAMENTO	 LOCALE TECNICO	 TOILET	 AREE ASFALTATE & GHIAIA
 AULA STUDIO	 MAGAZZINO	 UFFICIO	 AREE ESTERNE PAVIMENTATE
 BAR & MENSA	 SALA COMUNE	 ZONA DI PASSAGGIO	 AREE VERDI
 CUCINA			

Identificativo immobile:

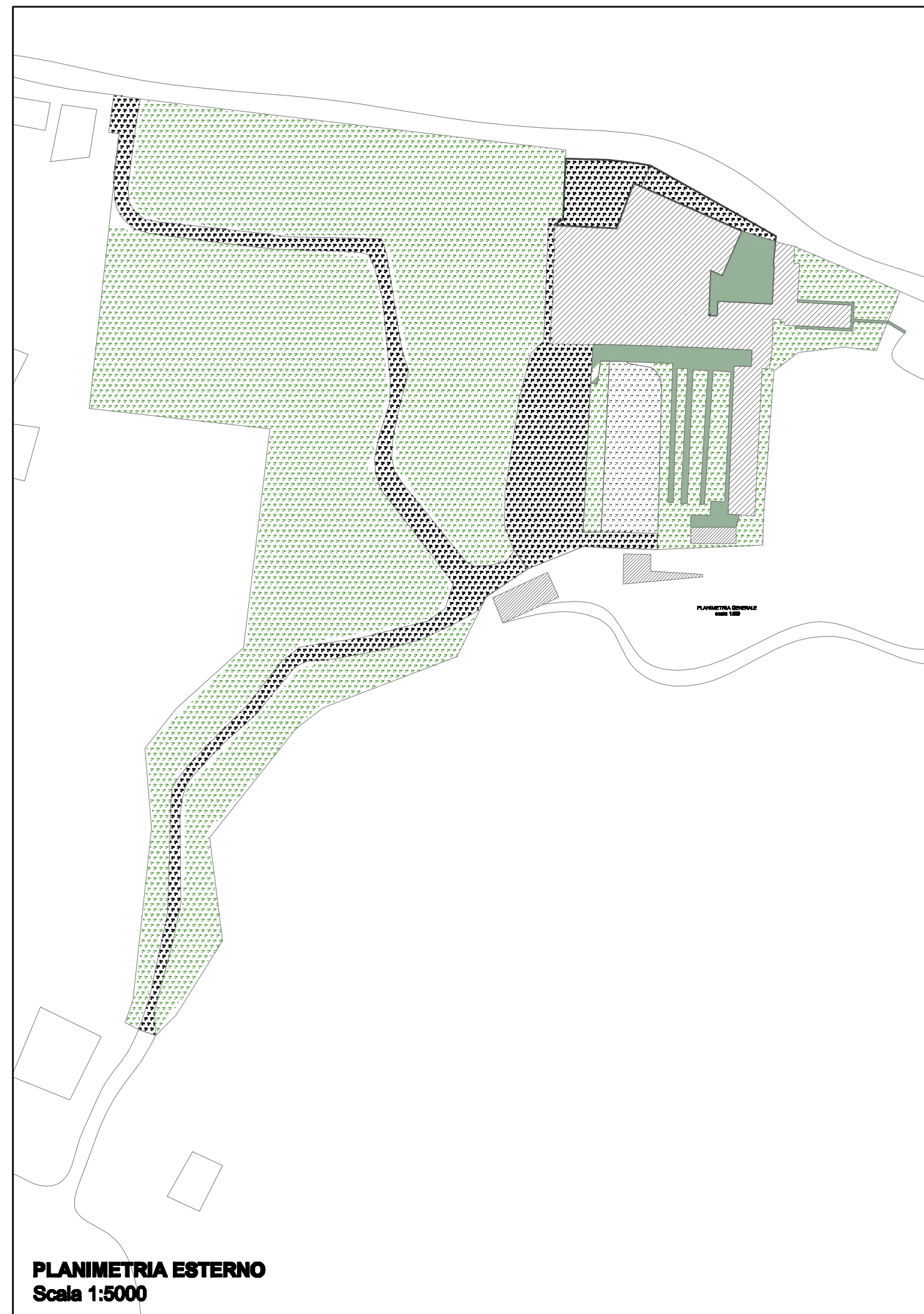
Badia Fiesolana

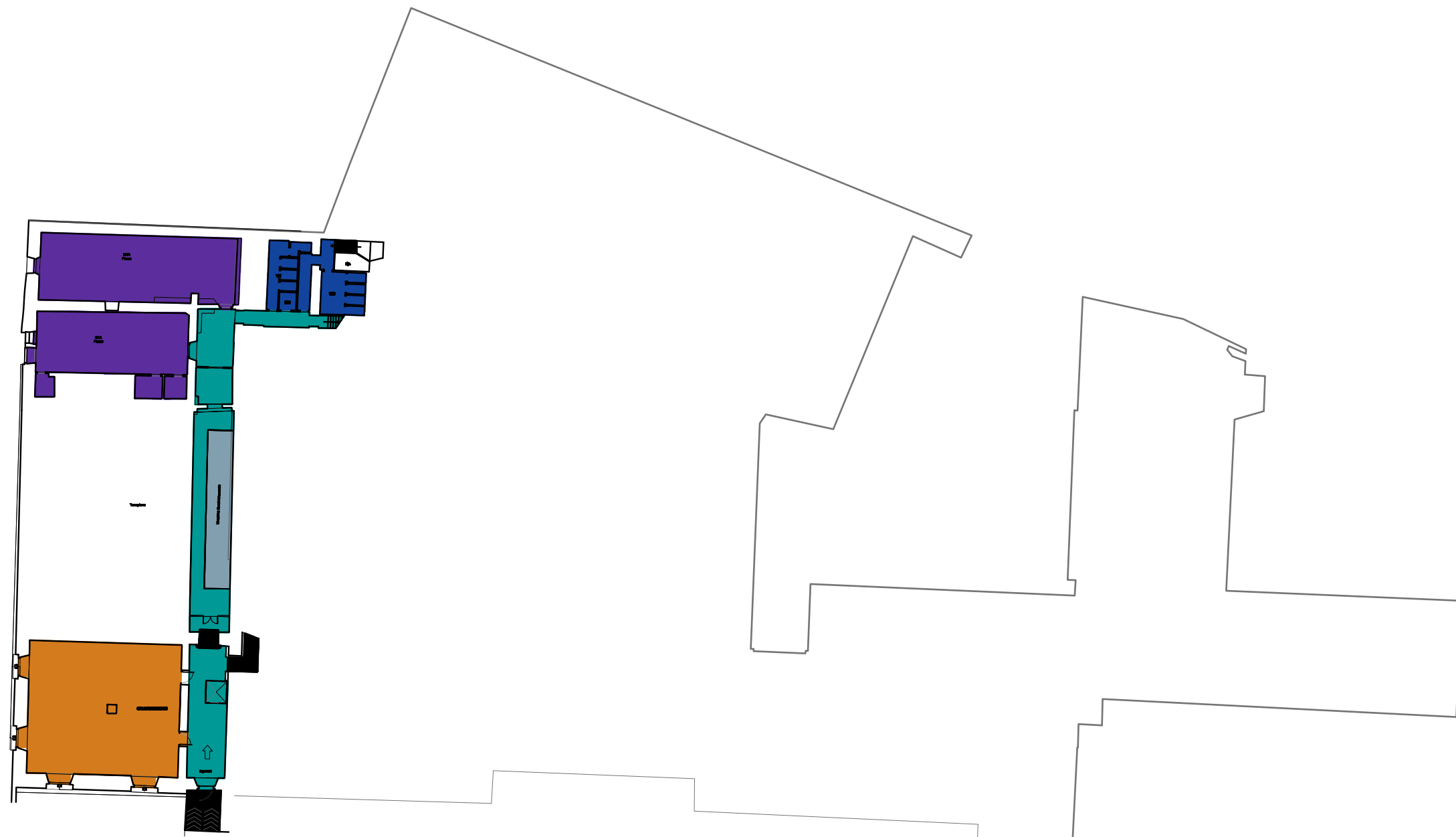
via de Roccettini ,9 50014 San Domenico Fiesole

Piano: Piano Terra, Piano Primo, Secondo, Terzo, Quarto, Quinto.

BF







16/09/2013





PIANO TERRA
Quota 117.24 slm

Legenda:

- | | | | |
|---|---|---|--|
|  MAGAZZINO |  TOILET |  ZONA DI PASSAGGIO |  AREE ESTERNE PAVIMENTATE |
|  SALA COMUNE |  UFFICIO | | |

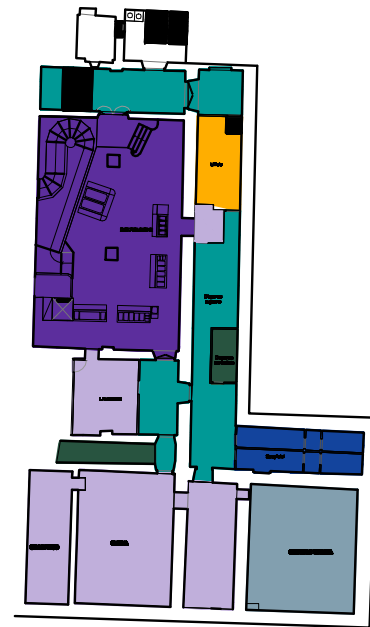
PIANO TERRA
Scala 1:500



PIANO PRIMO
Quota 121.00 slm





PIANO PRIMO INFERIORE
Quota 119.76 slm



PIANO PRIMO INFERIORE
Scala 1:500

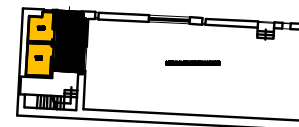
Legenda:

- | | | | |
|---|---|---|--|
|  MAGAZZINO |  TOILET |  ZONA DI PASSAGGIO |  AREE ESTERNE PAVIMENTATE |
|  SALA COMUNE |  UFFICIO | | |

PIANO PRIMO
Quota +121.45 slm



PIANO PRIMO
Scala 1:500



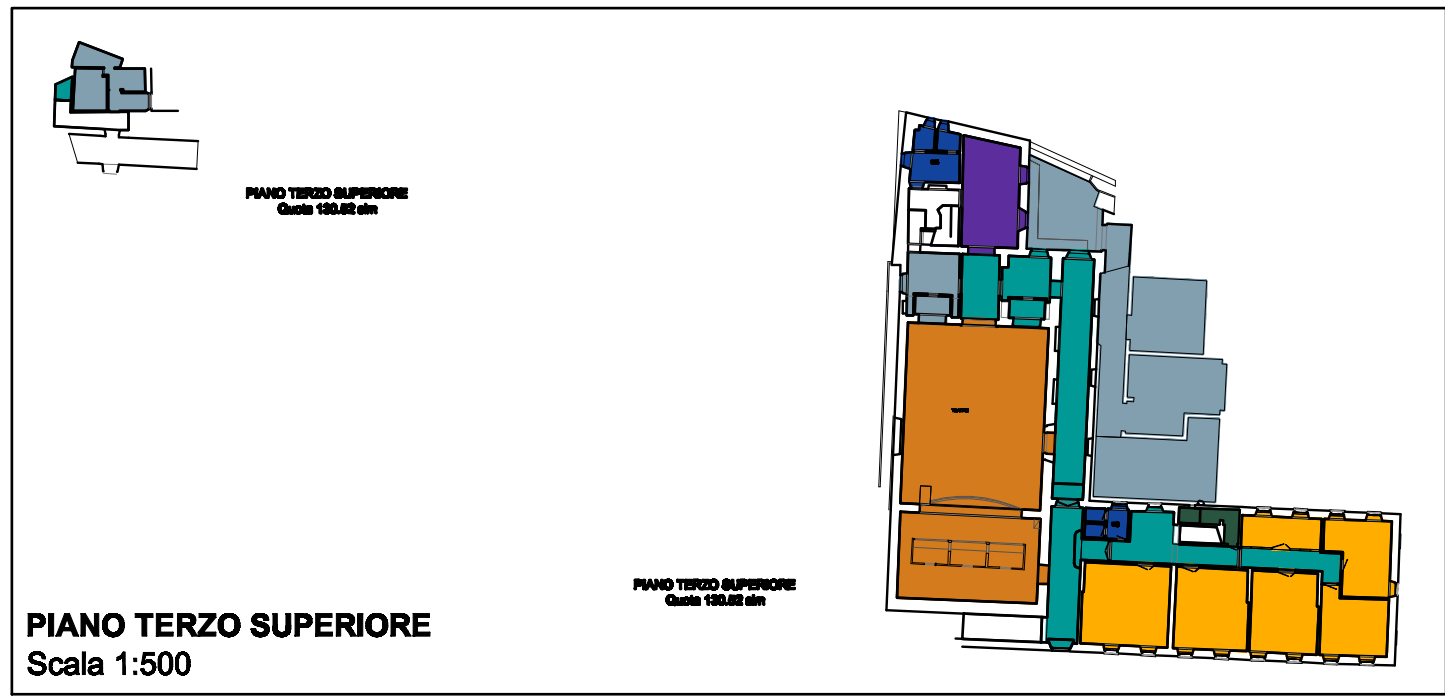
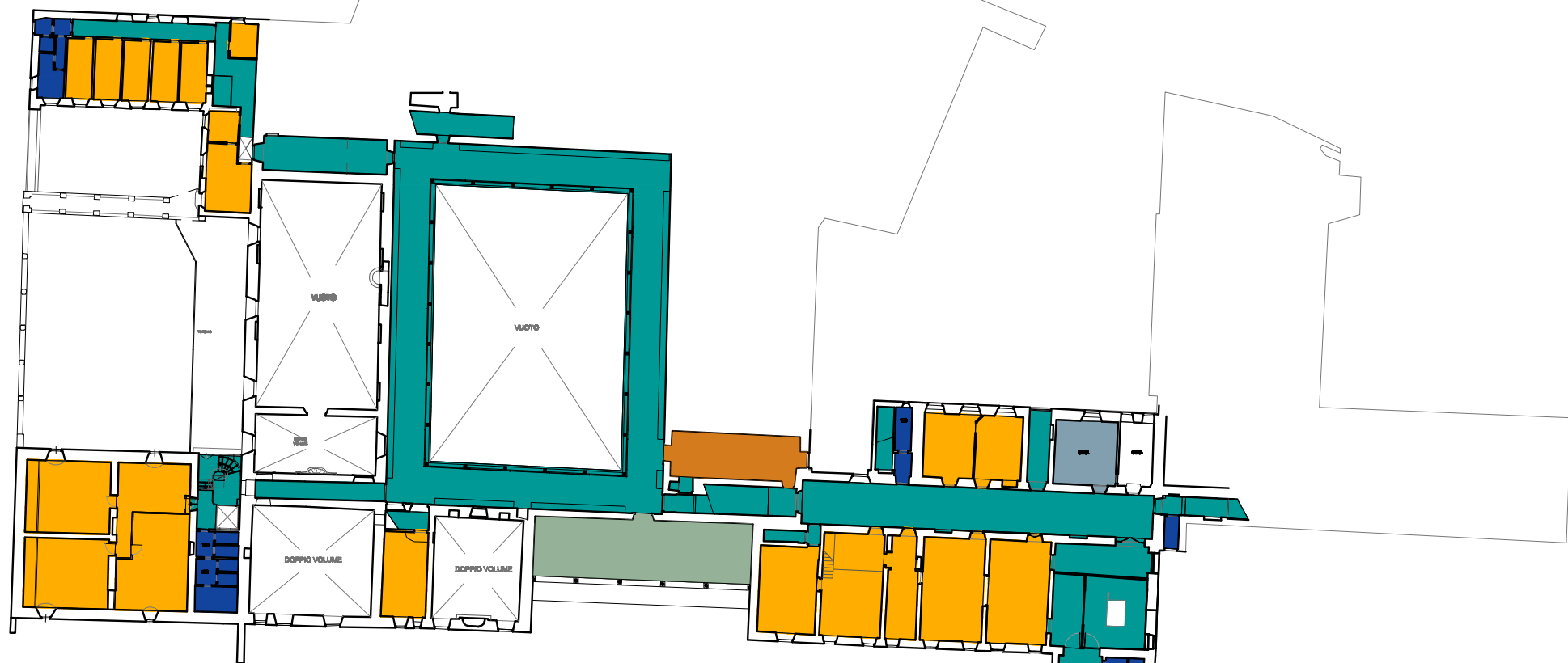


PIANO SECONDO
Quota 128.75 slm

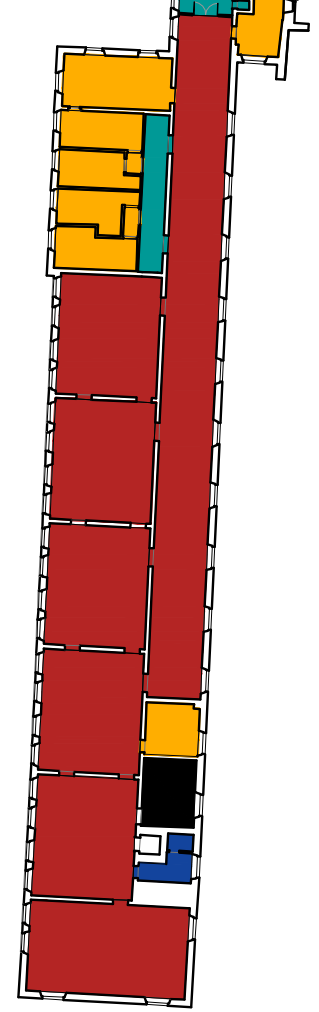
PIANO SECONDO
Scala 1:500

Legenda:

- | | | | |
|---|---|---|--|
|  MAGAZZINO |  TOILET |  ZONA DI PASSAGGIO |  AREE ESTERNE PAVIMENTATE |
|  SALA COMUNE |  UFFICIO | | |



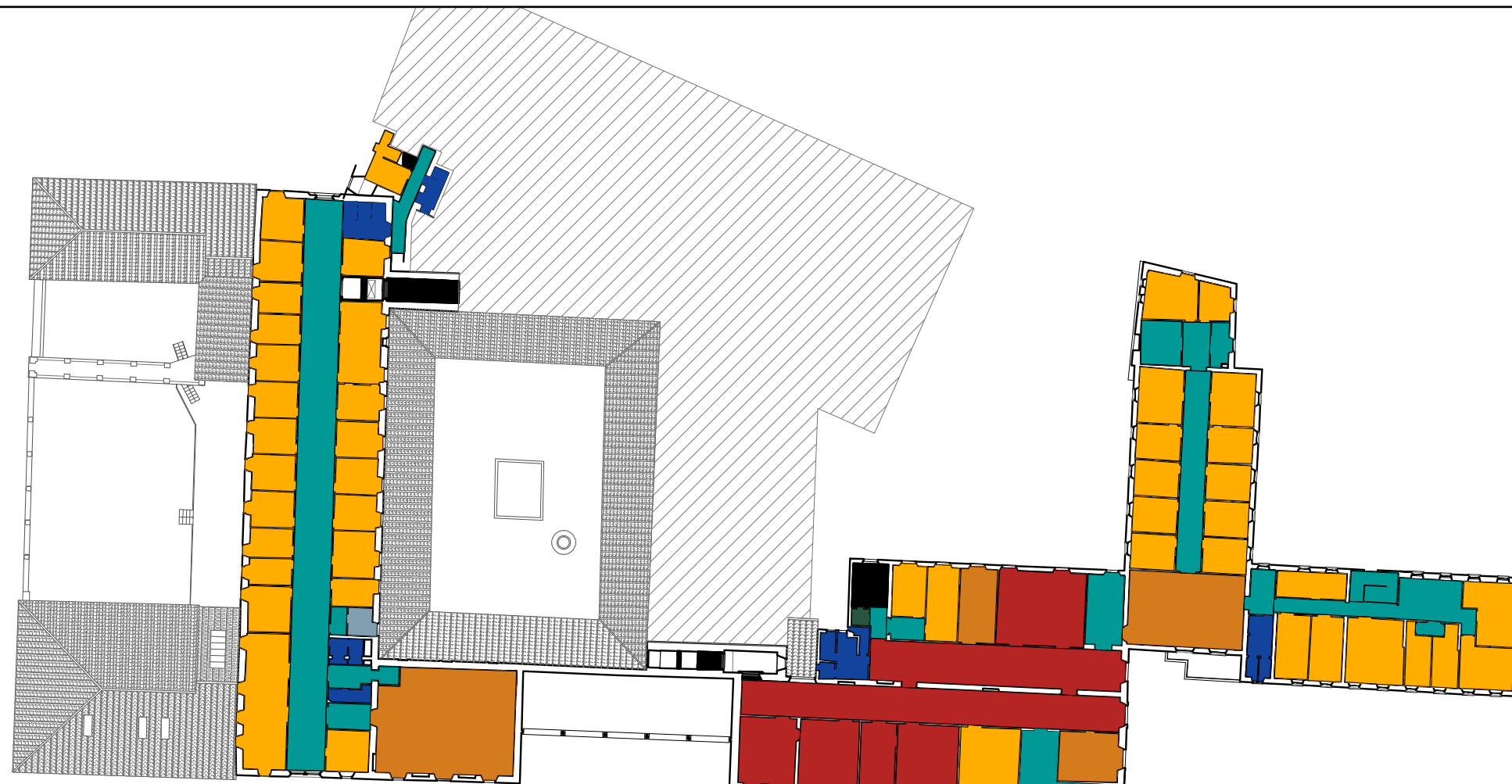
PIANO TERZO
Quota 127.20 c/m



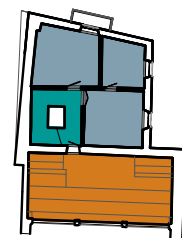
PIANO TERZO
Scala 1:500

Legenda:

- | | | | |
|---|---|---|--|
|  MAGAZZINO |  TOILET |  ZONA DI PASSAGGIO |  AREE ESTERNE PAVIMENTATE |
|  SALA COMUNE |  UFFICIO | | |

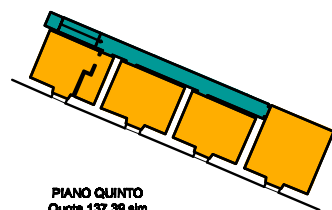


PIANO QUARTO
Quota 136.33 slm



PIANO QUARTO INFERIORE
Quota 136.23 slm

PIANO QUARTO INFERIORE
Scala 1:500



PIANO QUINTO
Quota 137.39 slm

PIANO QUINTO
Scala 1:500

Legenda:

- | | | | |
|---|---|---|--|
|  MAGAZZINO |  TOILET |  ZONA DI PASSAGGIO |  AREE ESTERNE PAVIMENTATE |
|  SALA COMUNE |  UFFICIO | | |

PIANO QUARTO
Scala 1:500

