

# European University Institute

ALLEGATO H.



**Legenda:**

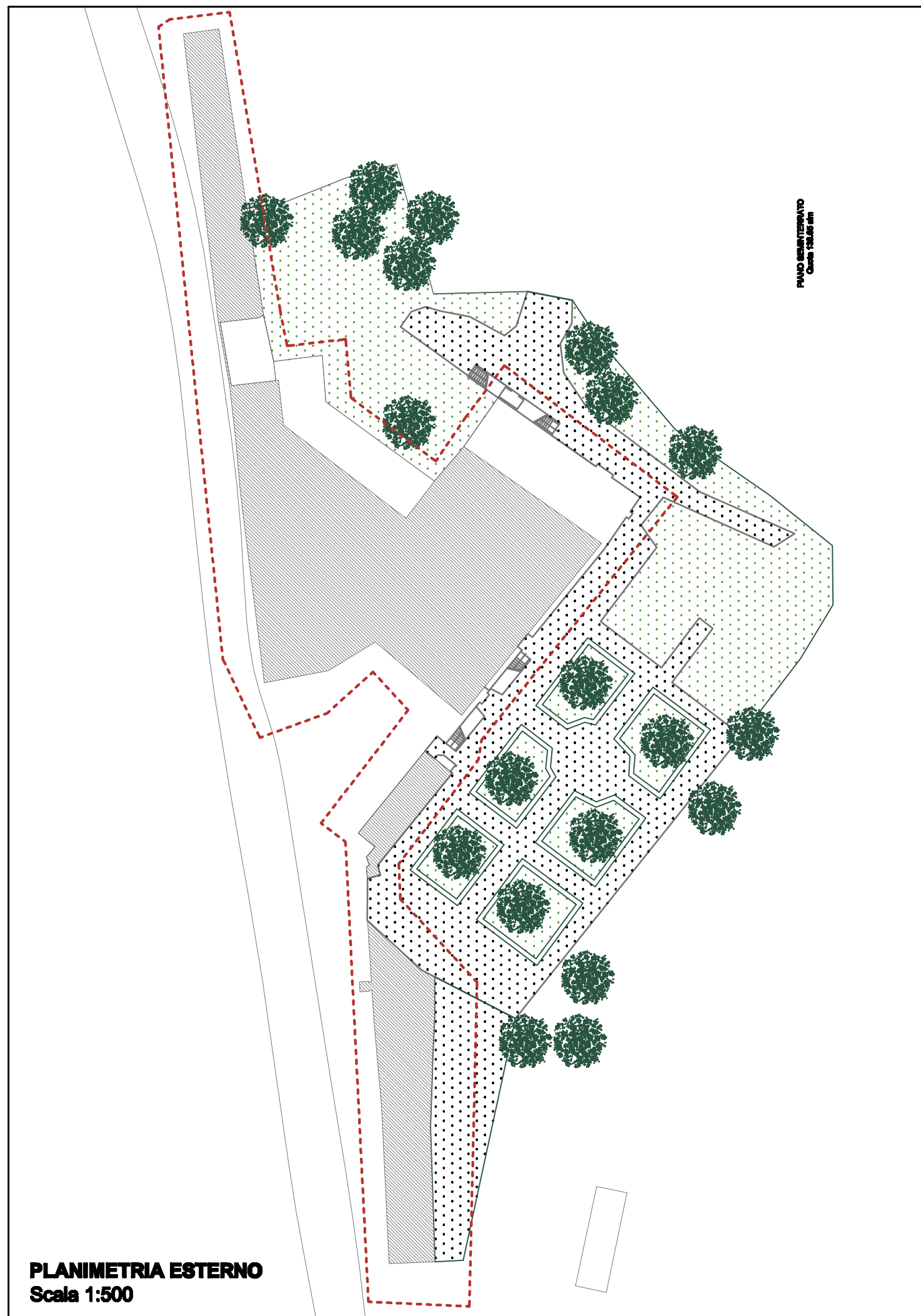
APPARTAMENTO	LOCALE TECNICO	TOILET	AREE ASFALTATE & GHIAIA
AULA STUDIO	MAGAZZINO	UFFICIO	AREE ESTERNE PAVIMENTATE
BAR & MENSA	SALA COMUNE	ZONA DI PASSAGGIO	AREE VERDI
CUCINA			

Identificativo Immobile:  
**Villa La Fonte**  
 via delle Fontanelle, 50133 Firenze

Piano: **Villa, Serra, Limonala**

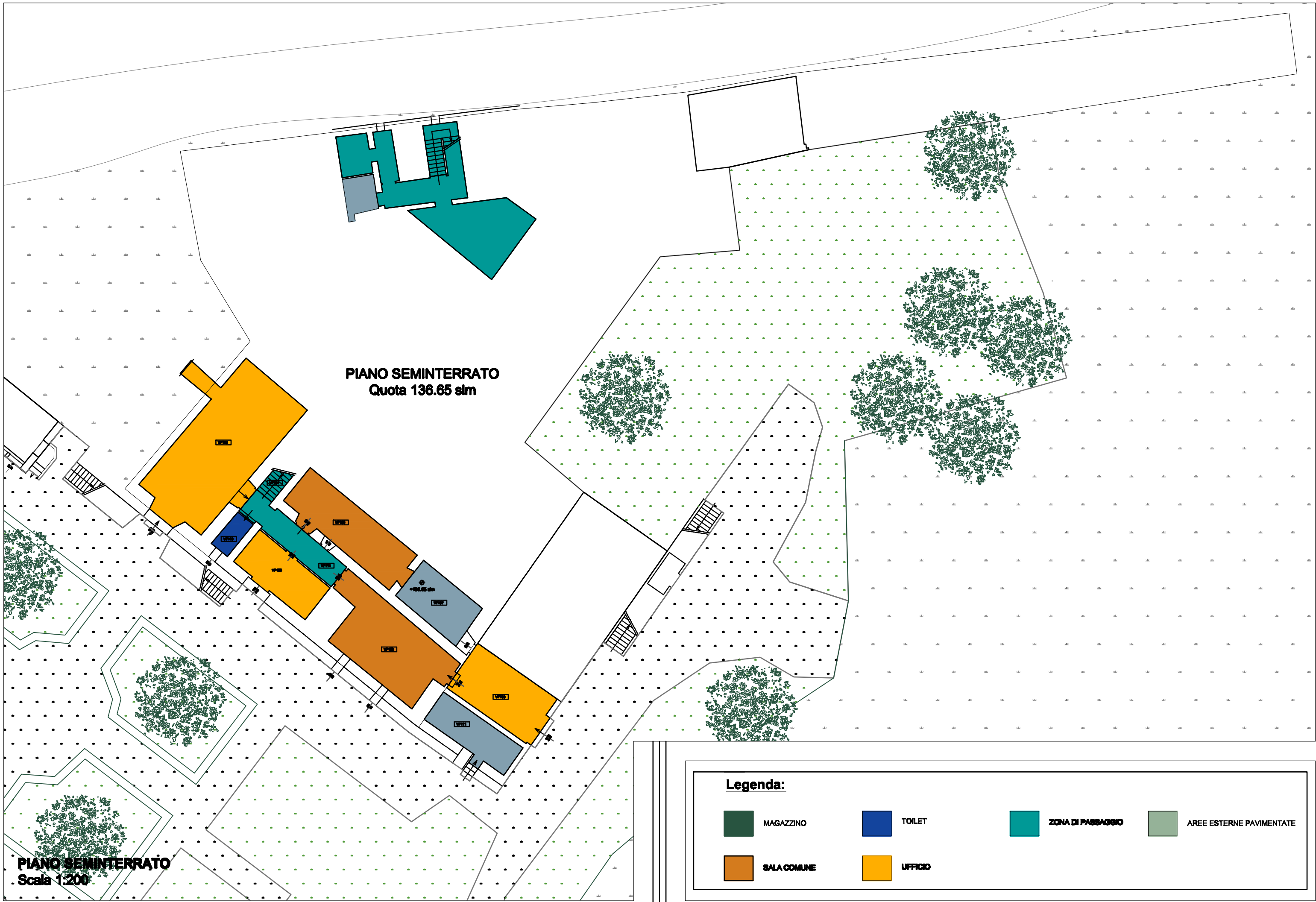
**VF**

16/09/2013









**PLANIMETRIA ESTERNO**  
 Scala 1:500

**PIANO SEMINTERRATO**  
Quota 136.65 slm



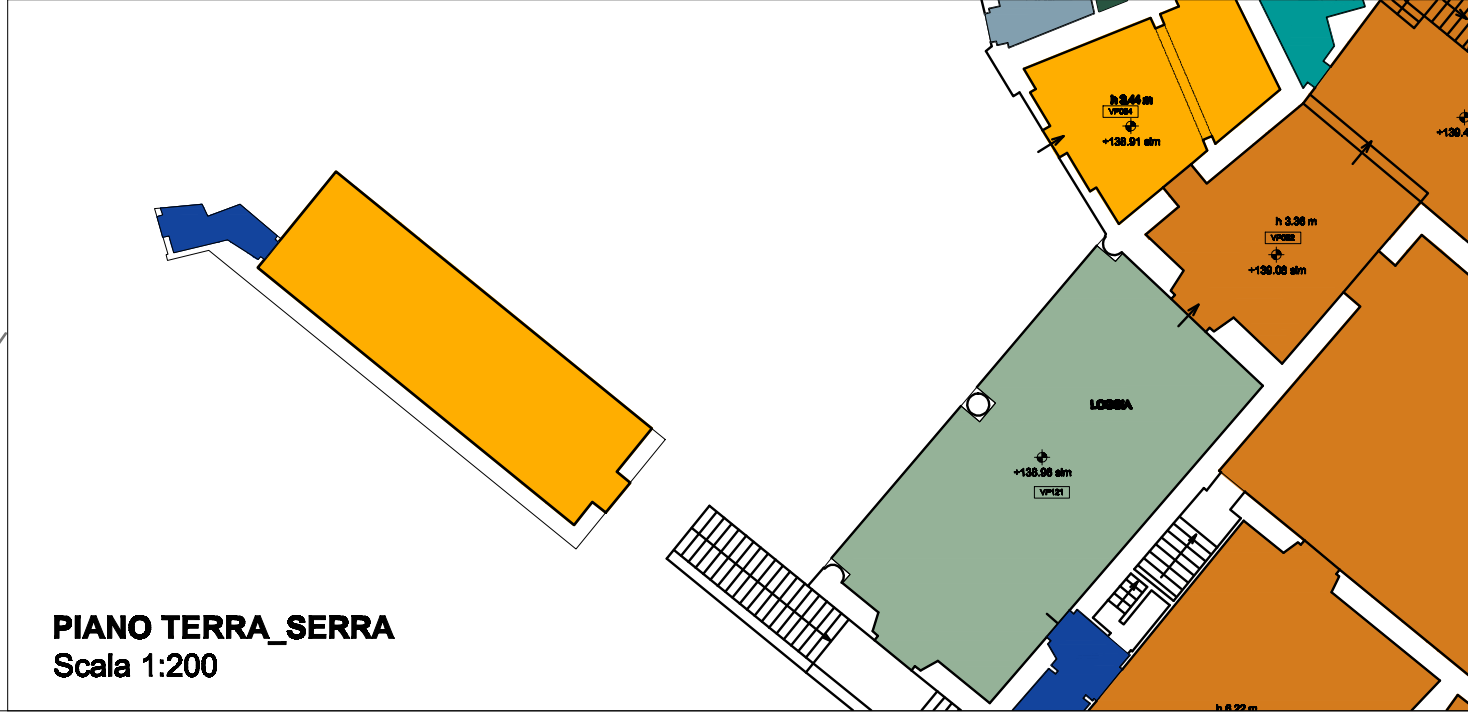
**PIANO SEMINTERRATO**  
Scala 1:200

**Legenda:**

- |   |   |   |  |
|---|---|---|--|
|  MAGAZZINO   |  TOILET  |  ZONA DI PASSAGGIO |  AREE ESTERNE PAVIMENTATE |
|  SALA COMUNE |  UFFICIO |   |  |






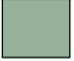


**PIANO TERRA**  
Quota 138.96 slm



**PIANO TERRA\_SERRA**  
Scala 1:200

**PIANO TERRA**  
Scala 1:200

**Legenda:**

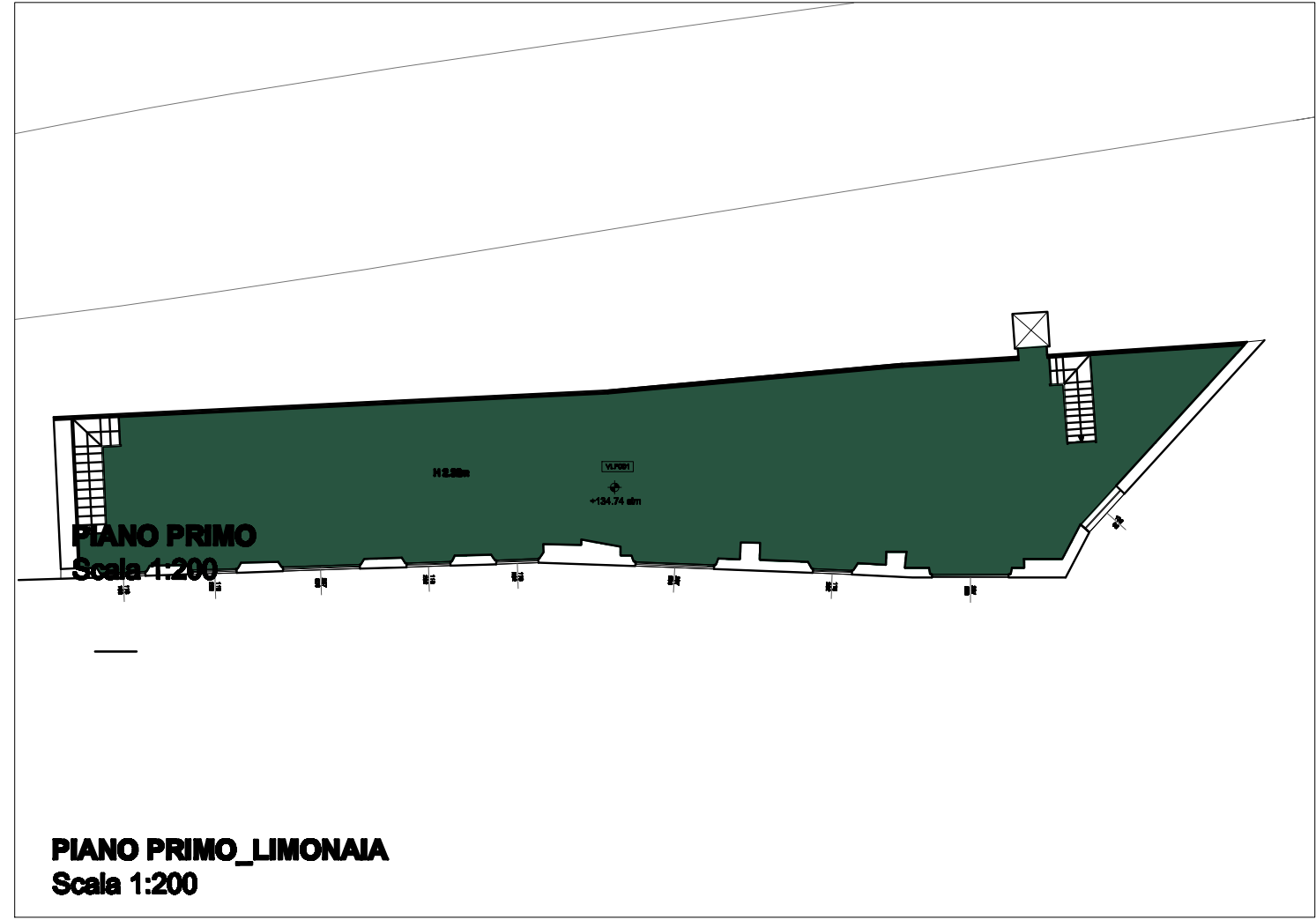
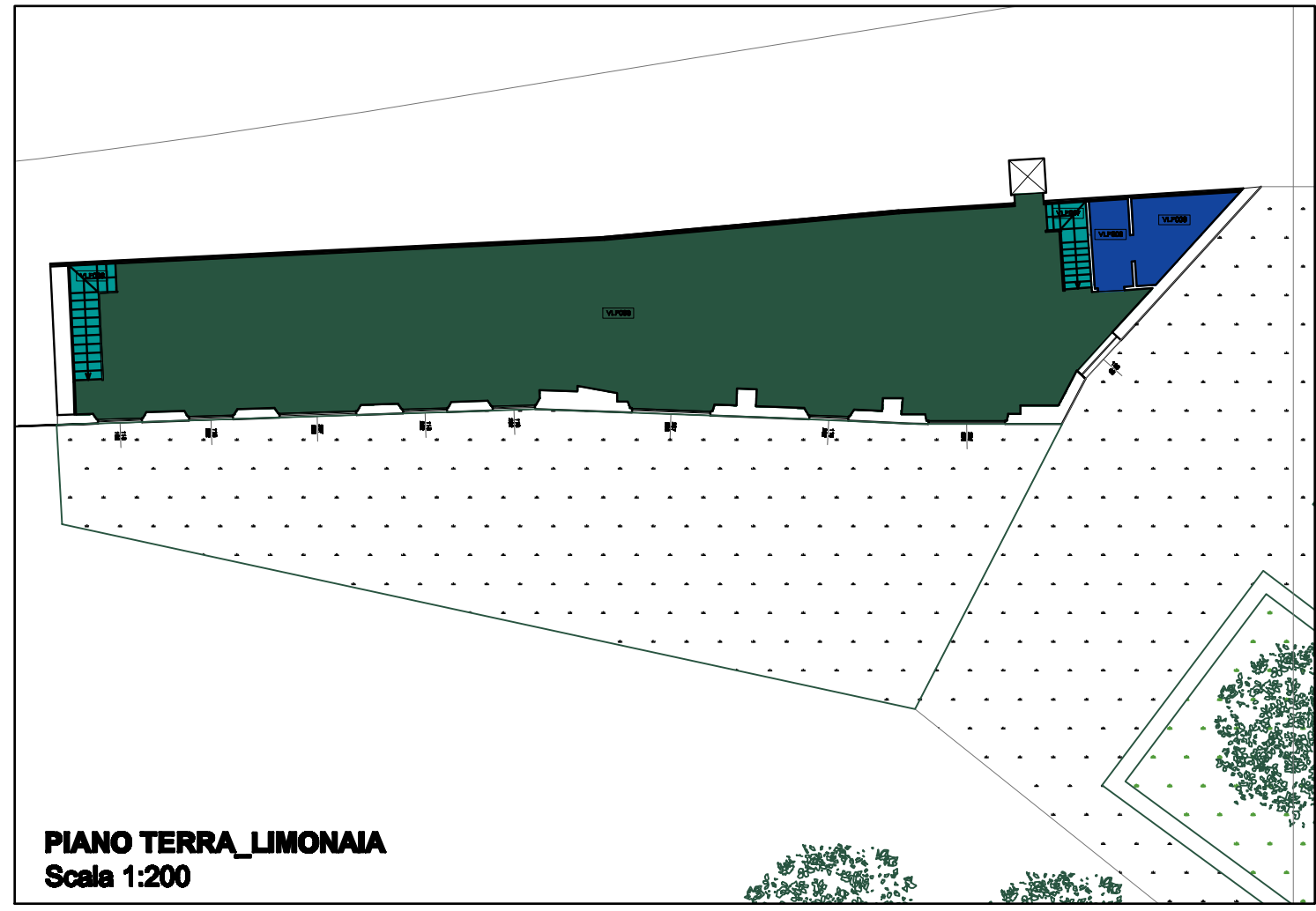
	MAGAZZINO		TOILET		ZONA DI PASSAGGIO		AREE ESTERNE PAVIMENTATE
	SALA COMUNE		UFFICIO				



**PIANO PRIMO**  
Scala 1:200

**Legenda:**

- |   |   |   |  |
|---|---|---|--|
|  MAGAZZINO   |  TOILET  |  ZONA DI PASSAGGIO |  AREE ESTERNE PAVIMENTATE |
|  SALA COMUNE |  UFFICIO |   |  |





**Legenda:**

- |   |   |   |  |
|---|---|---|--|
|  MAGAZZINO   |  TOILET  |  ZONA DI PASSAGGIO |  AREE ESTERNE PAVIMENTATE |
|  SALA COMUNE |  UFFICIO |   |  |