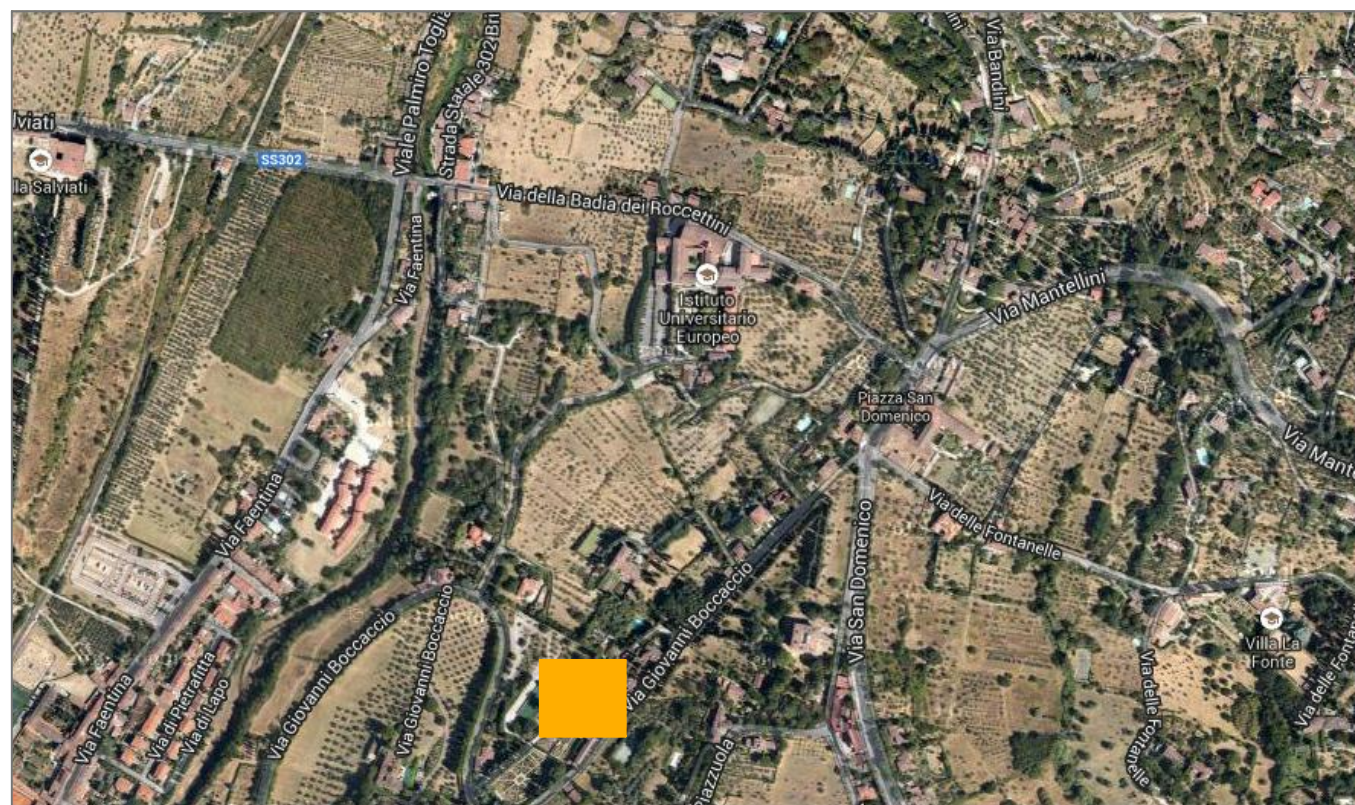


# European University Institute

ALLEGATO H.



**Legenda:**

APPARTAMENTO	LOCALE TECNICO	TOILET	AREE ASFALTATE & GHIAIA
AULA STUDIO	MAGAZZINO	UFFICIO	AREE ESTERNE PAVIMENTATE
BAR & MENSA	SALA COMUNE	ZONA DI PASSAGGIO	AREE VERDI
CUCINA			

Identificativo immobile:

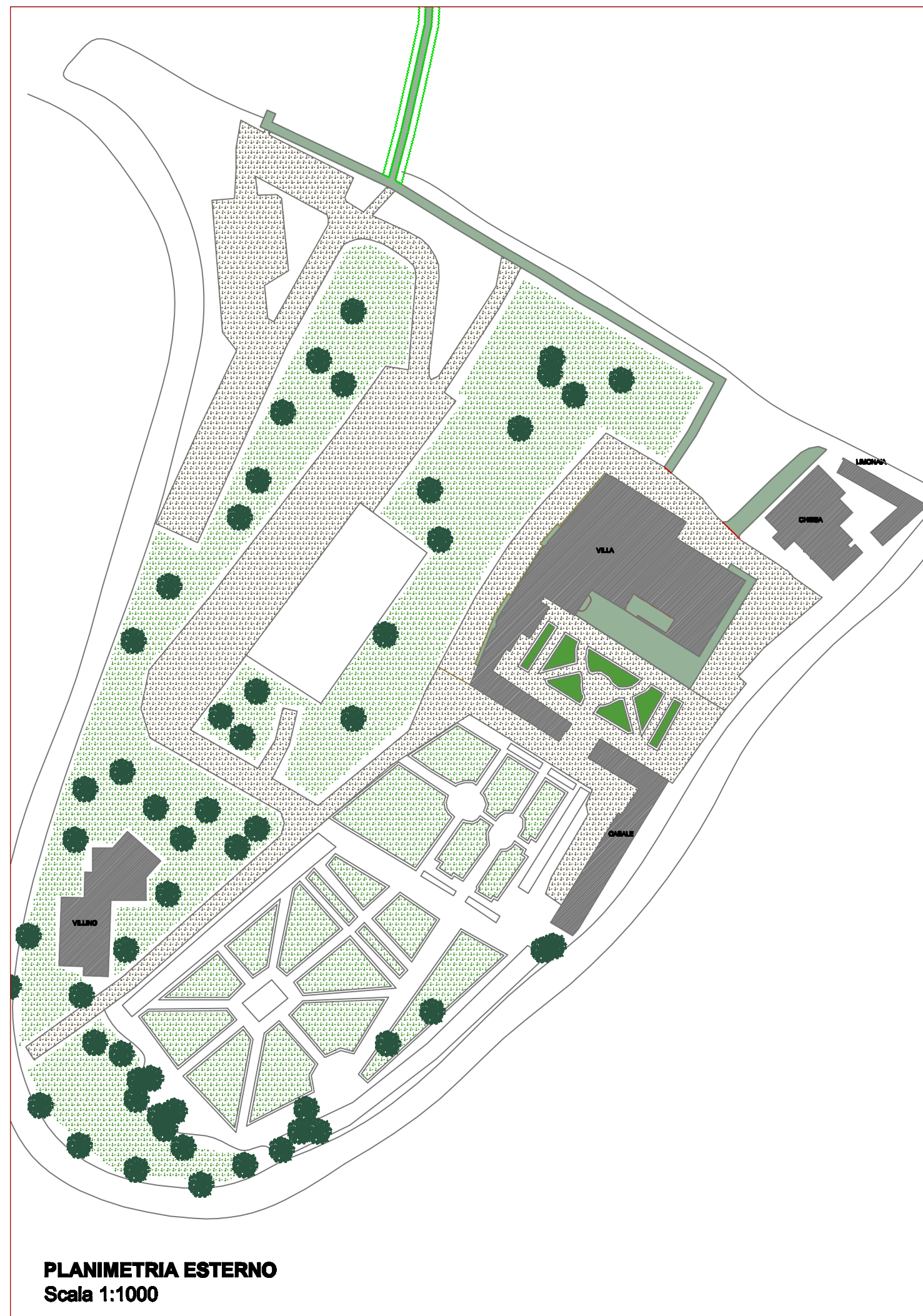
**Villa Schifanoia**

via Boccaccio, 121 50133 Firenze

Piano: Villa, Villino, Casale, Chiesa, Limonala.

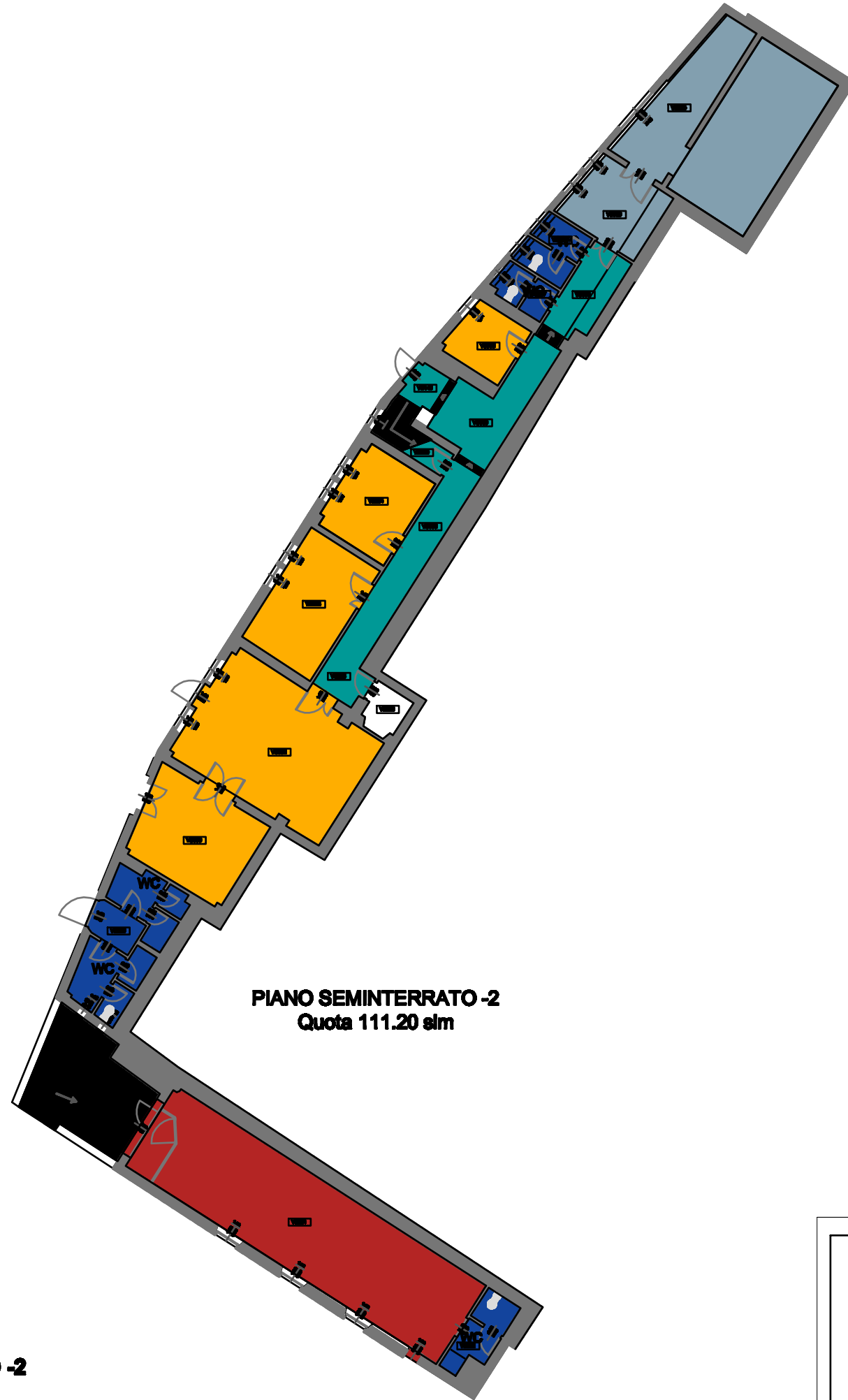
**VS**

16/09/2013



**PLANIMETRIA ESTERNO**  
Scala 1:1000

VILLA



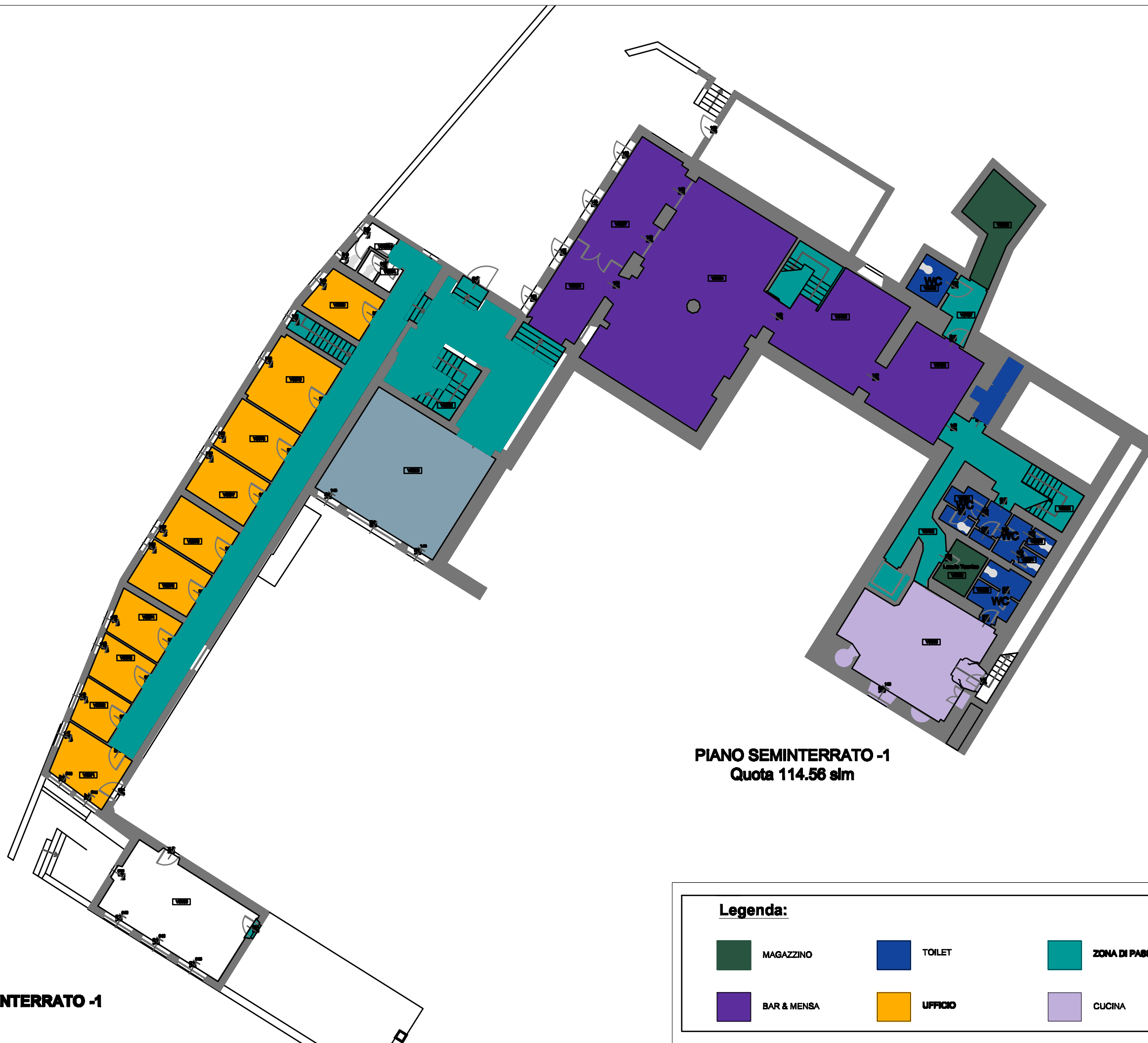
PIANO SEMINTERRATO -2  
Quota 111.20 slm

PIANO SEMINTERRATO -2  
Scala 1:200

**Legenda:**

	MAGAZZINO		TOILET		ZONA DI PASSAGGIO		AREE ESTERNE PAVIMENTATE
	AULA STUDIO		UFFICIO				








VILLA



PIANO SEMINTERRATO -1  
Quota 114.56 slm

PIANO SEMINTERRATO -1  
Scala 1:200

**Legenda:**

 MAGAZZINO	 TOILET	 ZONA DI PASSAGGIO	 AREE ESTERNE PAVIMENTATE
 BAR & MENSA	 UFFICIO	 CUCINA	

VILLA



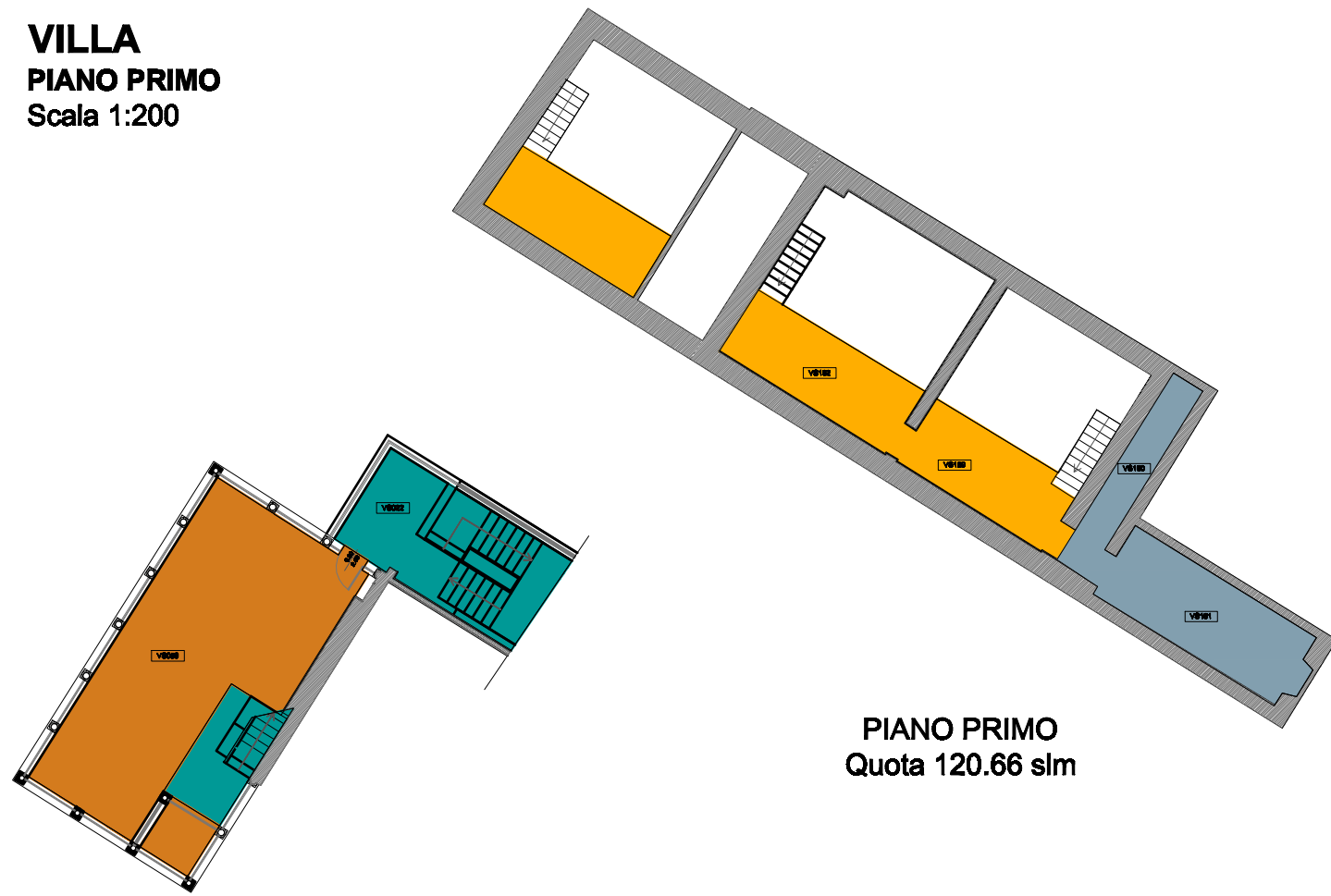
PIANO TERRA  
Quota 117.59 slm

PIANO TERRA  
Scala 1:200

Legenda:

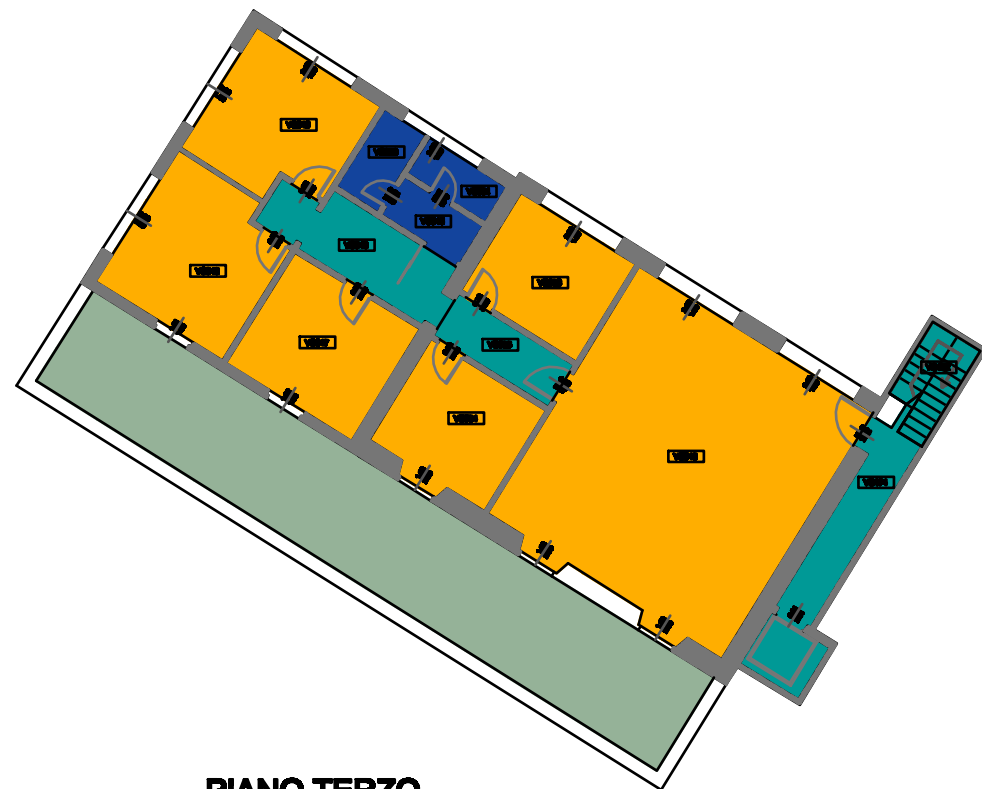
	MAGAZZINO		TOILET		ZONA DI PASSAGGIO		AREE ESTERNE PAVIMENTATE
	SALA COMUNE		UFFICIO				

**VILLA**  
**PIANO PRIMO**  
 Scala 1:200



**PIANO PRIMO**  
 Quota 120.66 slm

**PIANO TERZO**  
 Scala 1:200











**PIANO TERZO**  
 Quota 127.98 slm



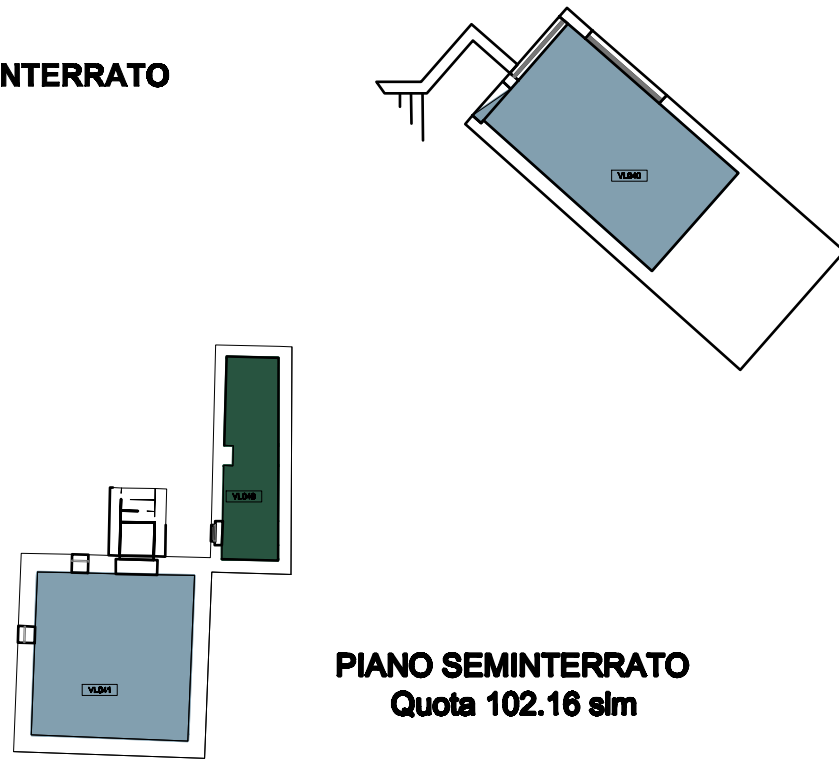
**PIANO SECONDO**  
 Quota 124.47 slm

**PIANO SECONDO**  
 Scala 1:200

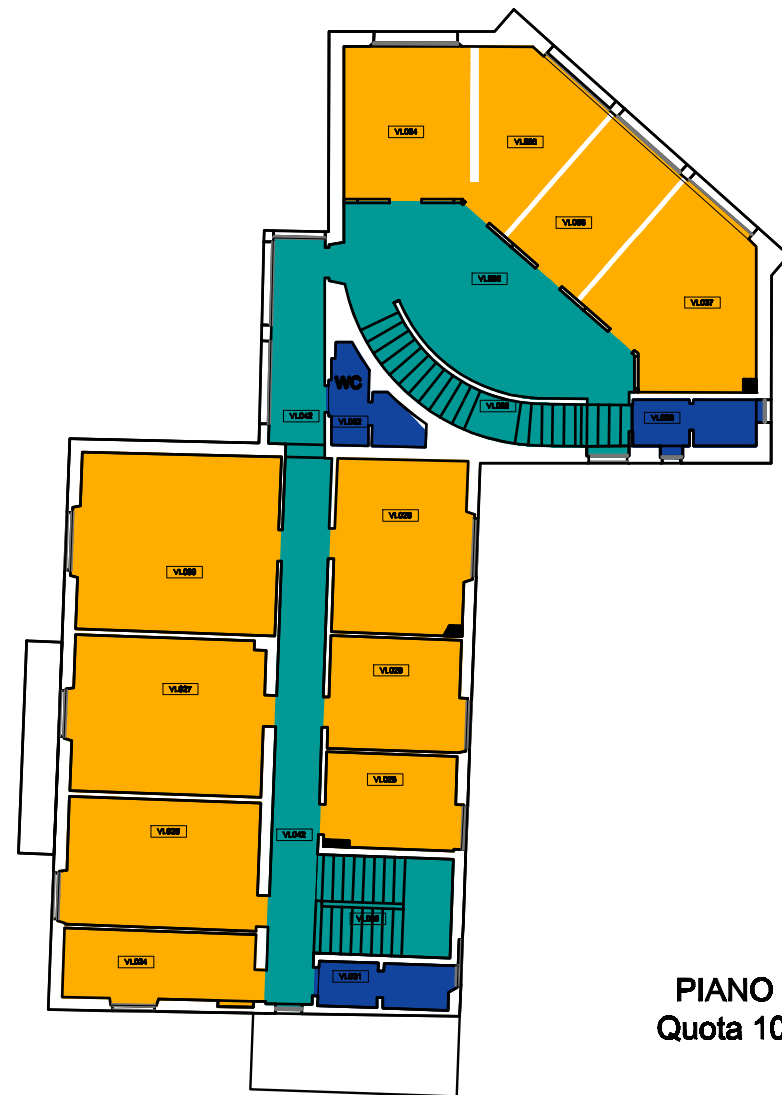
**Legenda:**

 <b>MAGAZZINO</b>	 <b>TOILET</b>	 <b>ZONA DI PASSAGGIO</b>	 <b>AREE ESTERNE PAVIMENTATE</b>
 <b>SALA COMUNE</b>	 <b>UFFICIO</b>	 <b>AULA STUDIO</b>	 <b>LOCALE TECNICO</b>

**VILLINO**  
**PIANO SEMINTERRATO**  
 Scala 1:200

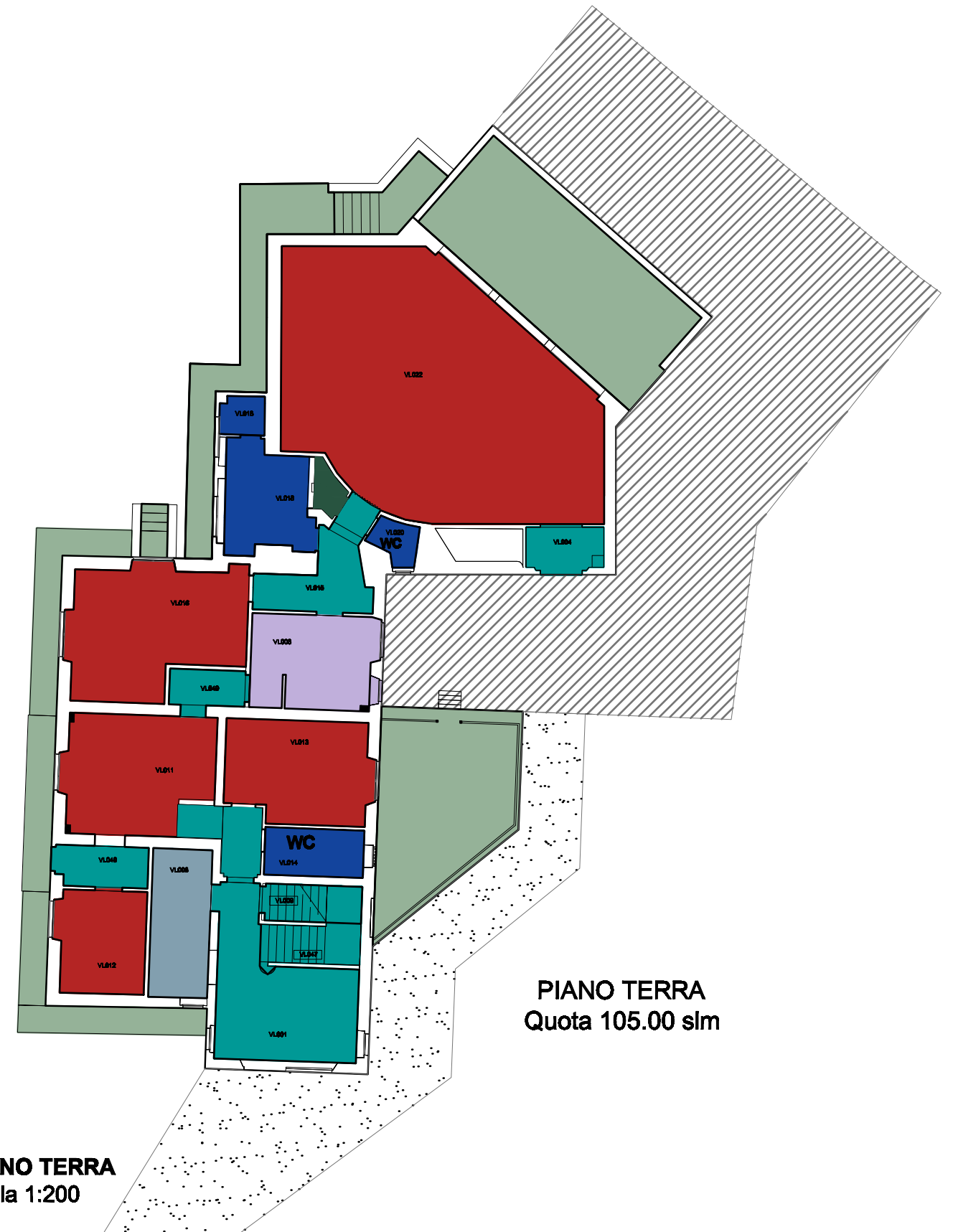


**PIANO SEMINTERRATO**  
 Quota 102.16 slm



**PIANO PRIMO**  
 Quota 109.15 slm



**PIANO PRIMO**  
 Scala 1:200

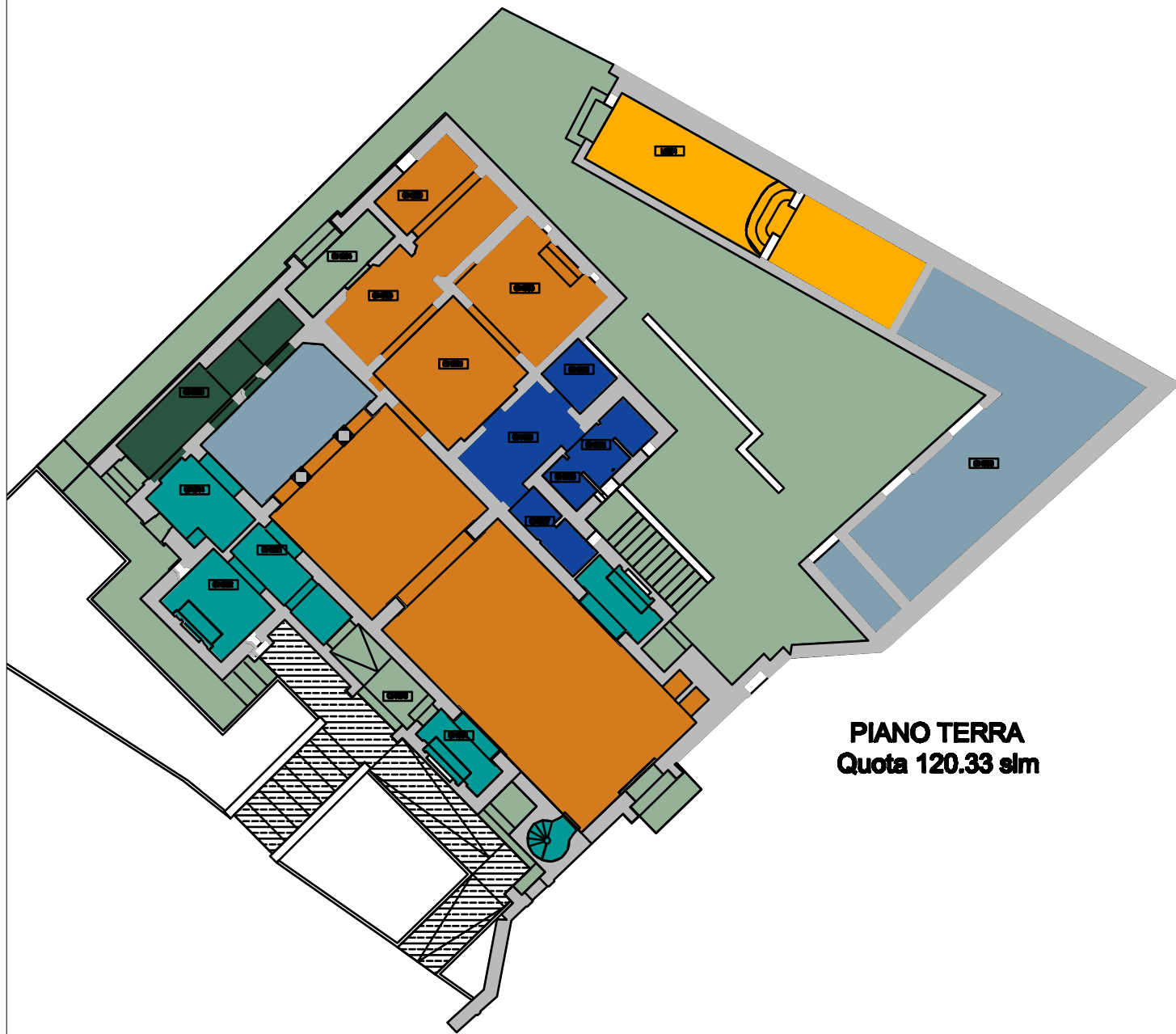


**PIANO TERRA**  
 Quota 105.00 slm

**PIANO TERRA**  
 Scala 1:200

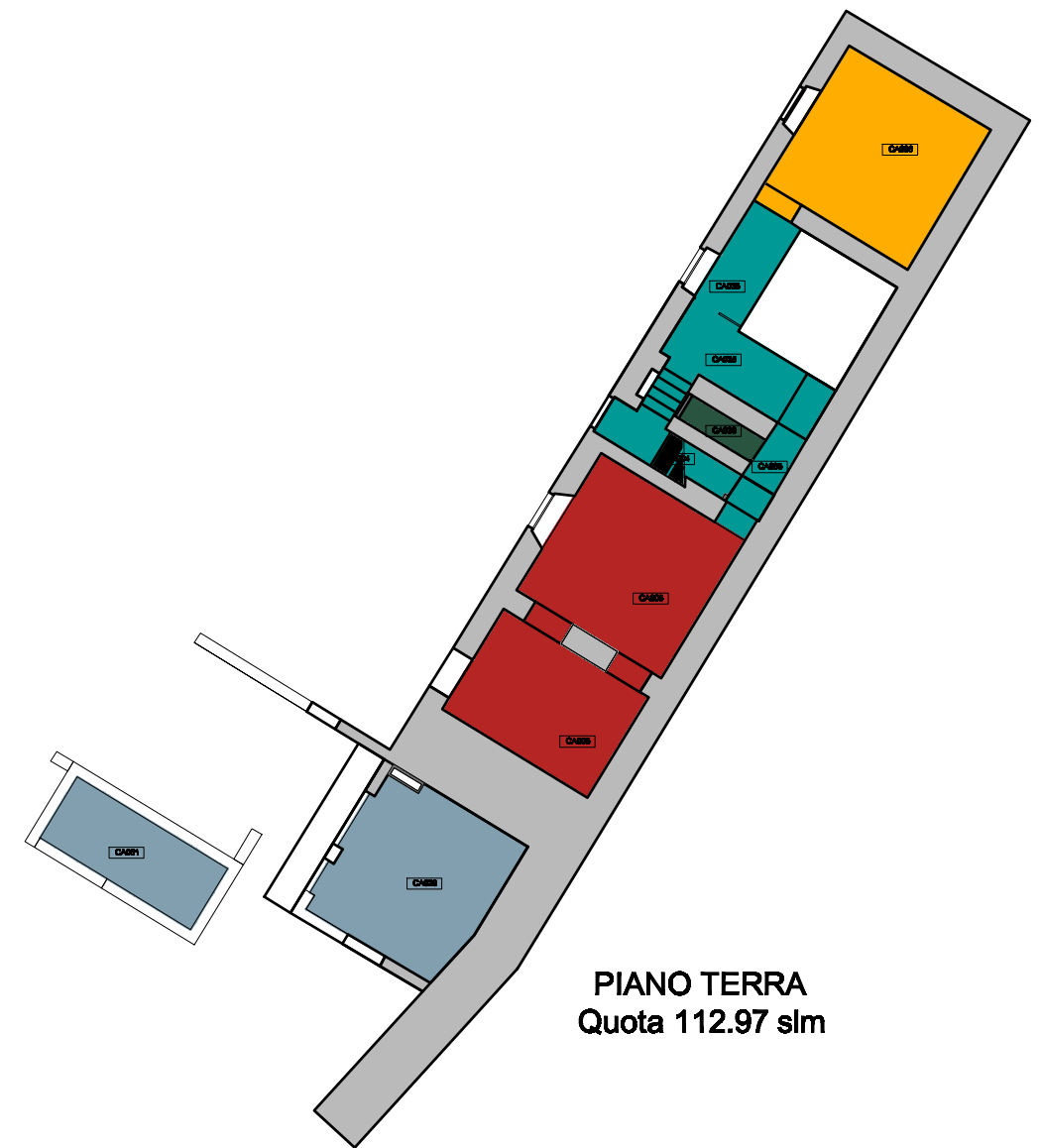
**Legenda:**

 <b>MAGAZZINO</b>	 <b>TOILET</b>	 <b>ZONA DI PASSAGGIO</b>	 <b>AREE ESTERNE PAVIMENTATE</b>
 <b>SALA COMUNE</b>	 <b>UFFICIO</b>	 <b>LOCALE TECNICO</b>	 <b>AULA STUDIO</b>



**PIANO TERRA**  
Quota 120.33 slm








**CHIESA E LIMONAIA**  
**PIANO TERRA**  
Scala 1:200



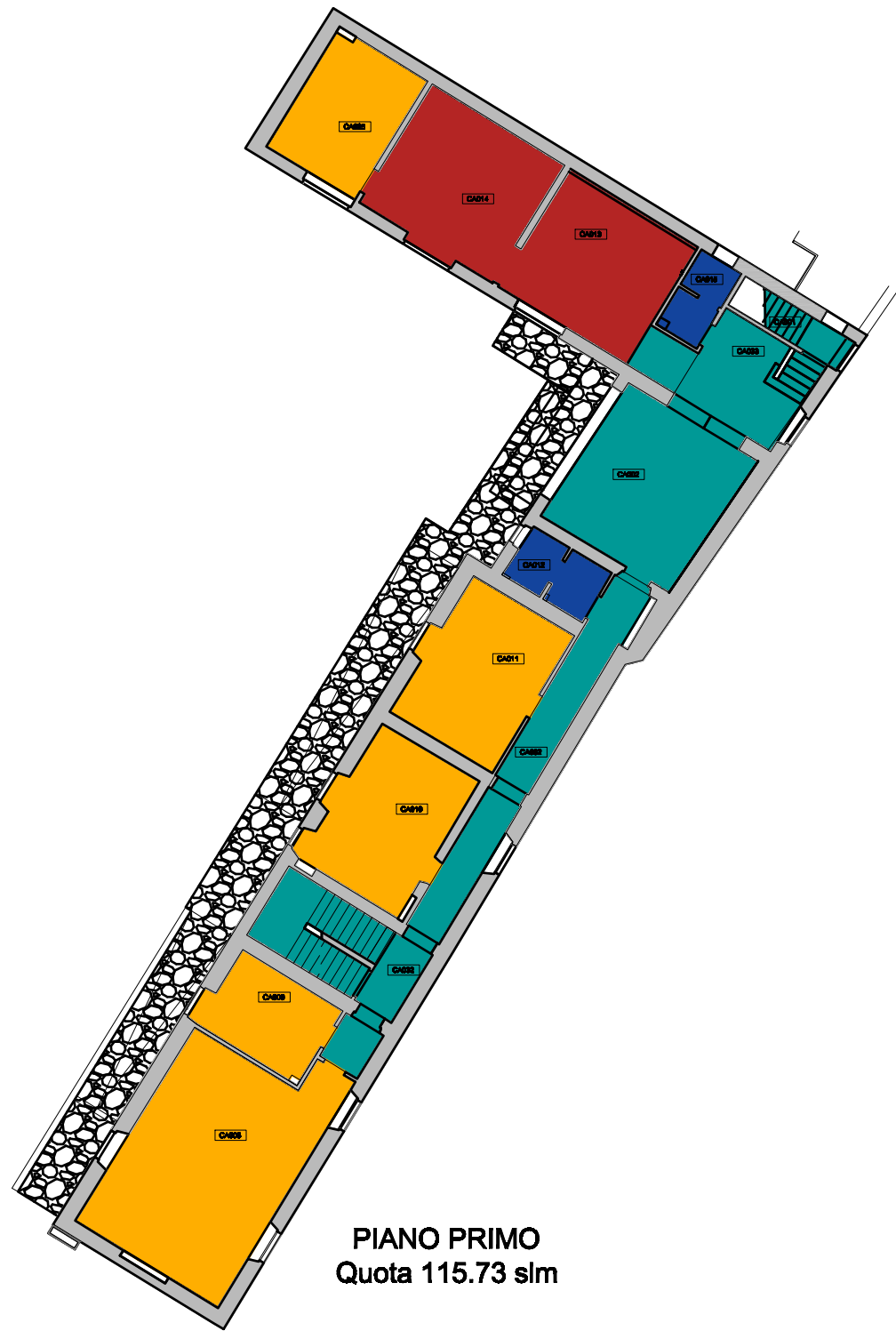
**PIANO TERRA**  
Quota 112.97 slm

**CASALE**  
**PIANO TERRA**  
Scala 1:200

**Legenda:**

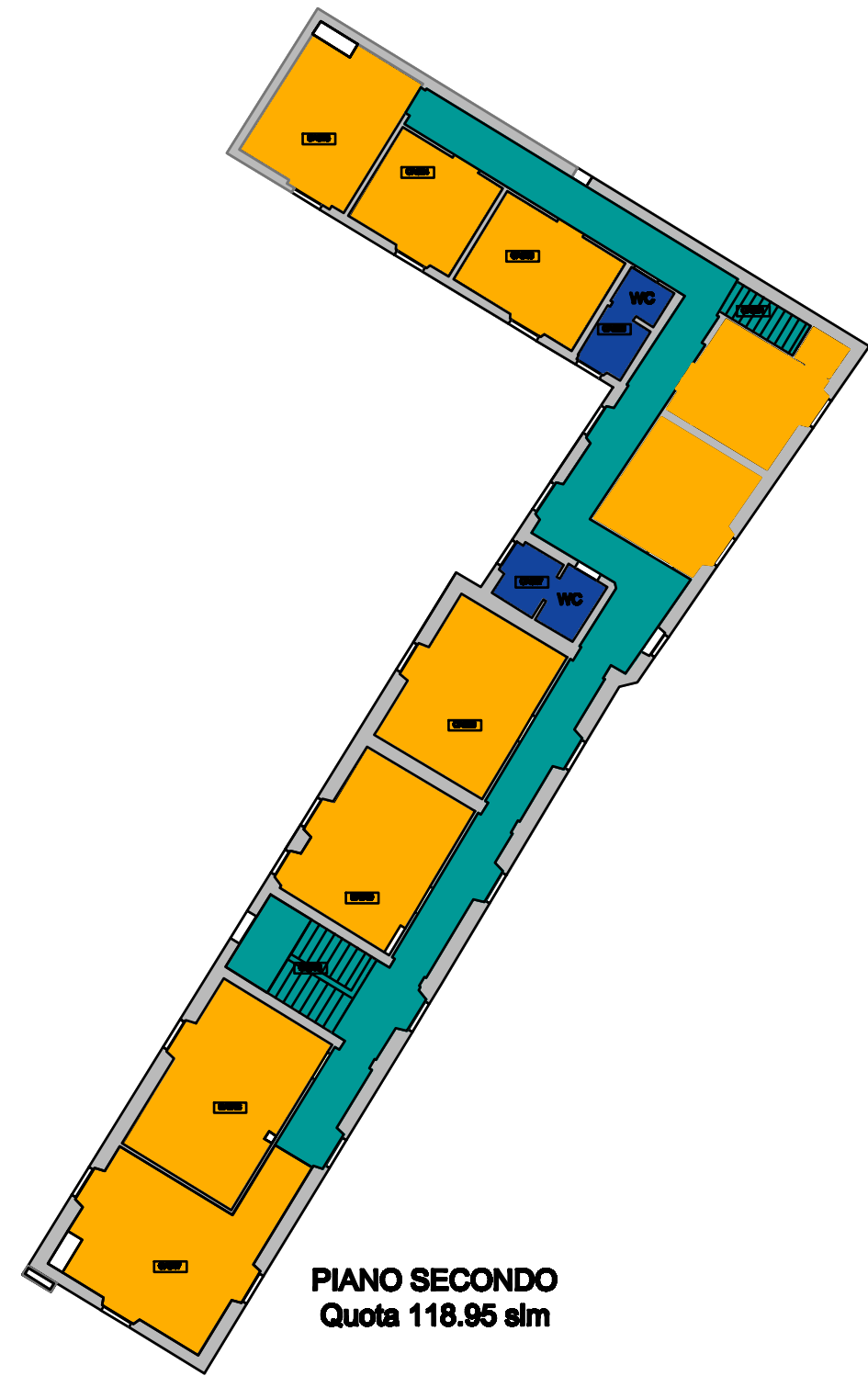
- |   |   |   |  |
|---|---|---|--|
|  AULA STUDIO |  TOILET  |  ZONA DI PASSAGGIO |  AREE ESTERNE PAVIMENTATE |
|  SALA COMUNE |  UFFICIO |  LOCALE TECNICO    |  |

# CASALE



PIANO PRIMO  
Quota 115.73 slm

PIANO PRIMO  
Scala 1:200



PIANO SECONDO  
Quota 118.95 slm

PIANO TERRA  
Scala 1:200

## Legenda:

	AULA STUDIO		TOILET		ZONA DI PASSAGGIO		AREE ESTERNE PAVIMENTATE
	SALA COMUNE		UFFICIO				