

ISTITUTO UNIVERSITARIO EUROPEO



RILIEVO DEGLI IMPIANTI ELETTRICI, MECCANICI E SPECIALI - DISPOSIZIONE APPARECCHIATURE

05/07/2013

Badia impianti.dwg

scala:1:200

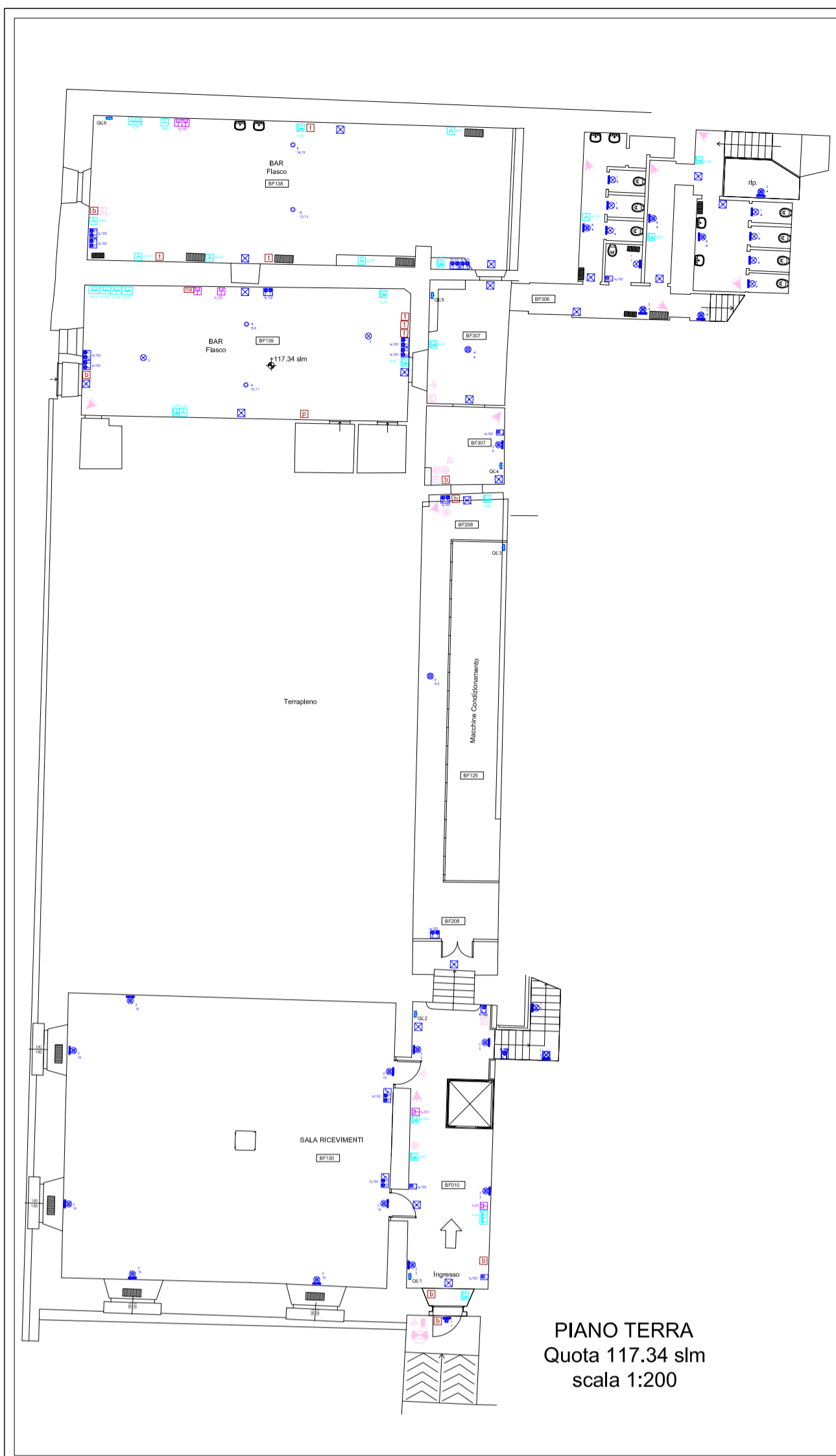
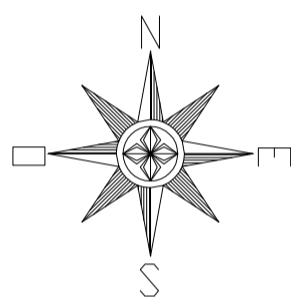
Identificativo immobile:

Badia Fiesolana

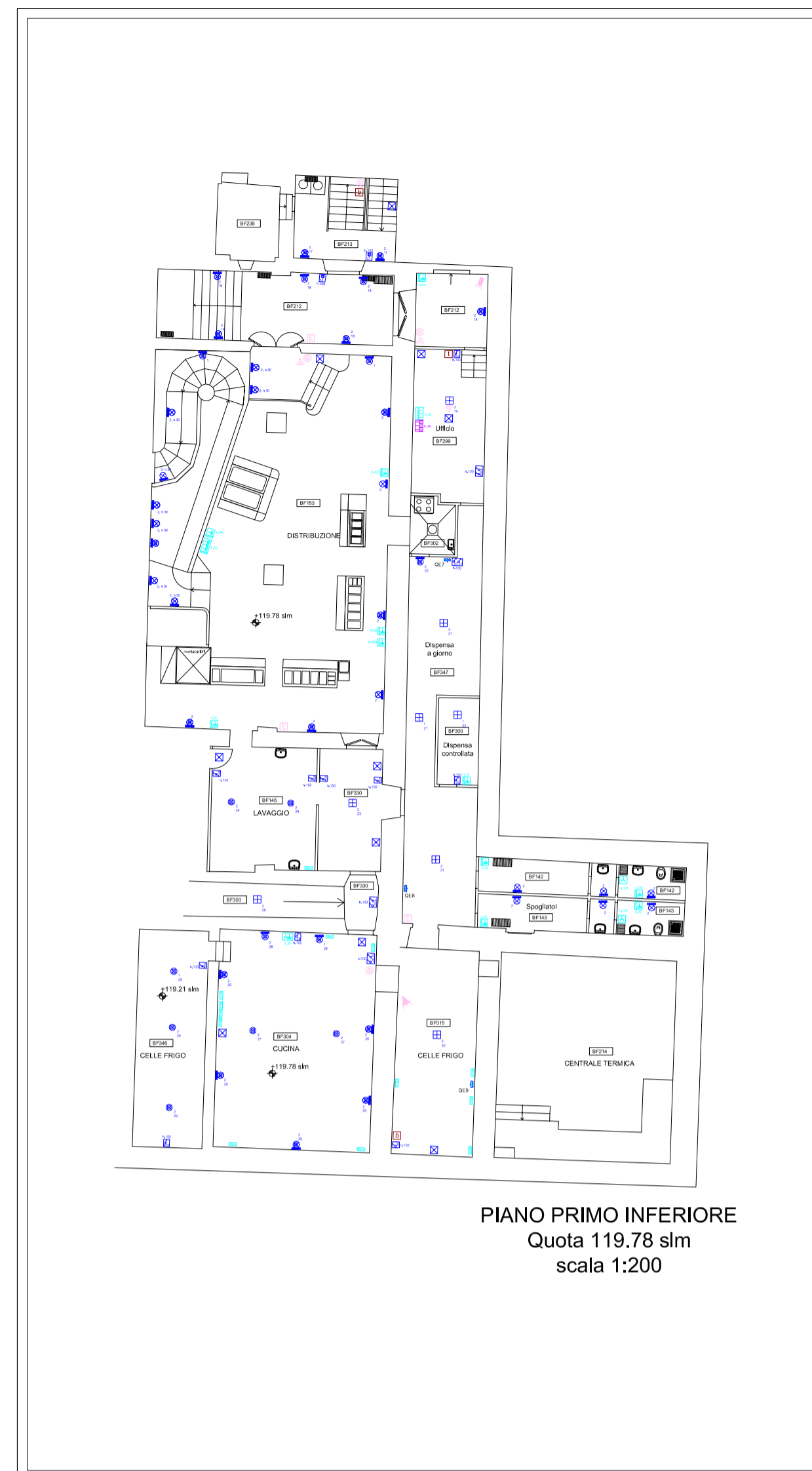
via dei Roccettini, 9 50014 San Domenico di Fiesole

Piano: Piano Terra, Piano Primo inferiore e Piano Primo

BF1



PIANO TERRA
Quota 117.34 slm
scala 1:200



PIANO PRIMO INFERIORE
Quota 119.78 slm
scala 1:200



PIANO PRIMO
Quota 121.50 slm
scala 1:200



RILEVO DEGLI IMPIANTI ELETTRICI, MECCANICI E SPECIALI - DISPOSIZIONE APPARECCHIATURE

Identificativo immobile:

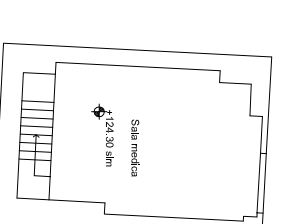
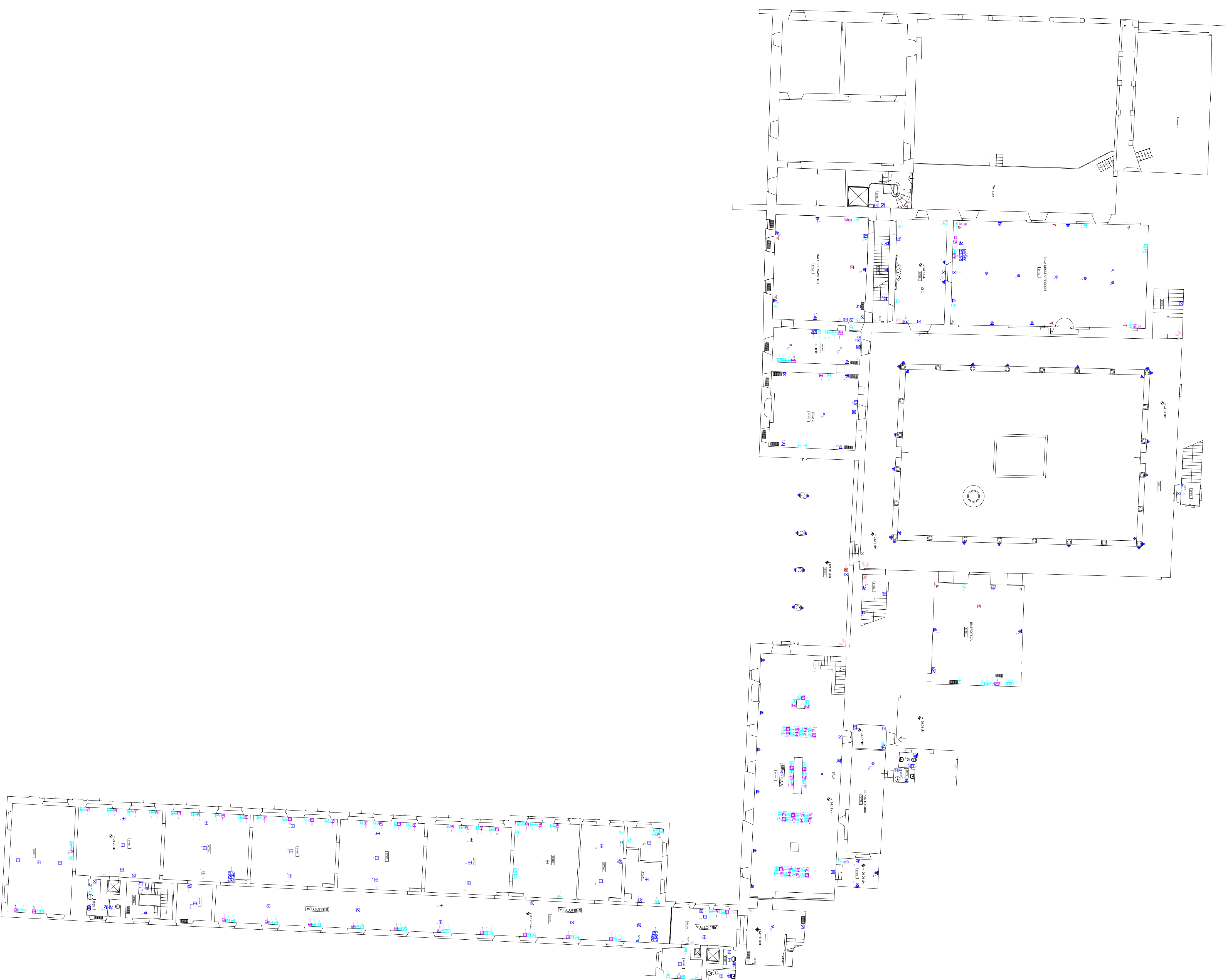
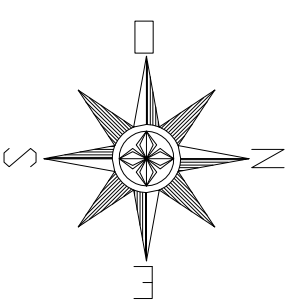
Badia Fiesolana
via dei Roccettini, 9 50014 San Domenico di Fiesole

BF2

05/07/2013

Badia impianti.dwg

scala:1:200



PIANO SECONDO
Quota 123,75 sim
scala 1:200



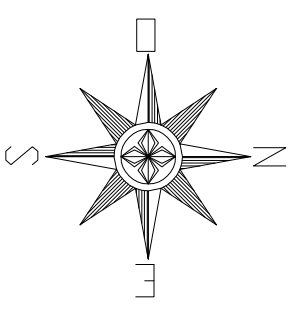
RILIEVO DEGLI IMPIANTI ELETTRICI, MECCANICI E SPECIALI - DISPOSIZIONE APPARECCHIATURE

05/07/2013

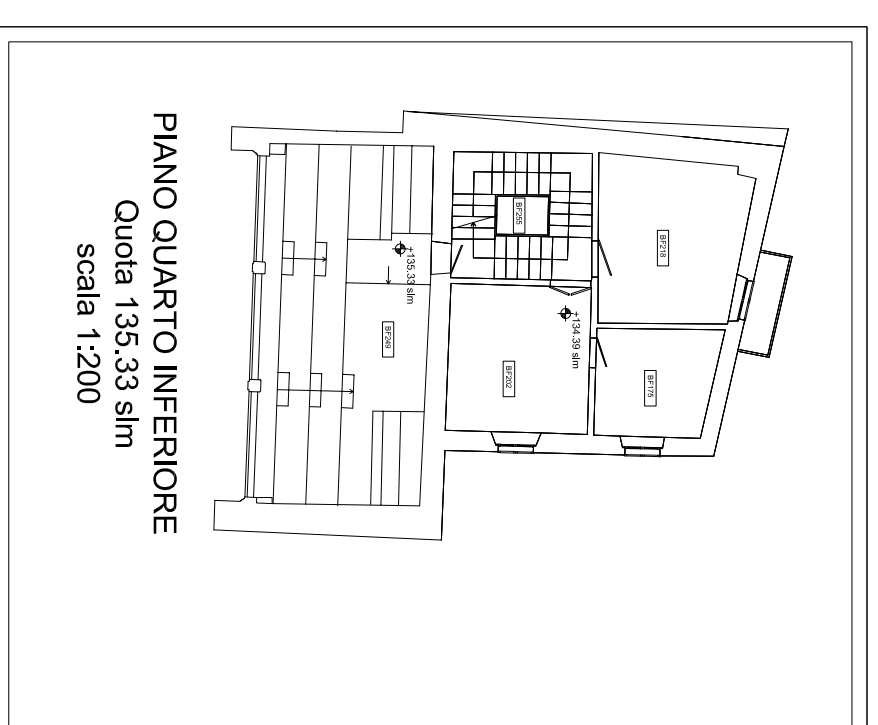
Badia Immobiliare
Scale: 1:200

Identificativo immobile:
Badia Fiesolana
Via dei Roccettini, 9 50014 San Domenico di Fiesole
Piano: Piano Quarto Inferiore, Piano Quarto, Piano Quinto

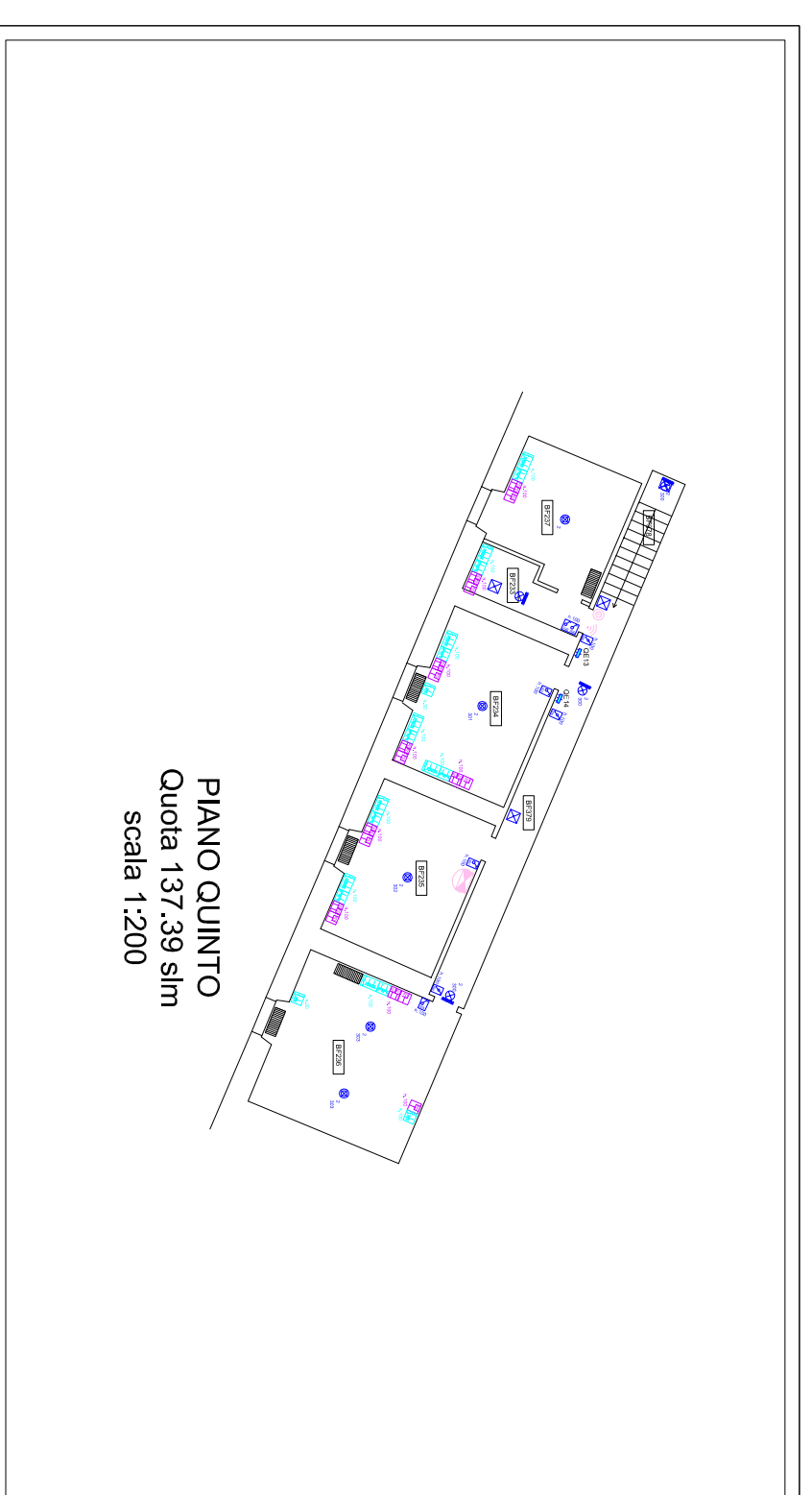
BF4



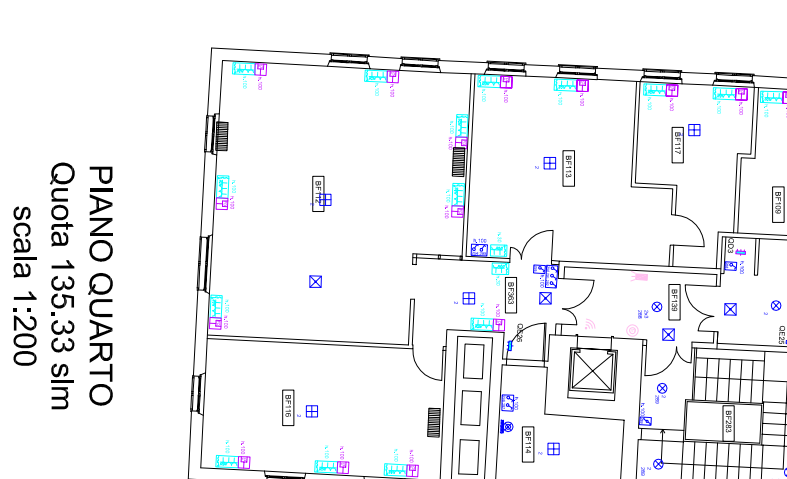
PIANO QUARTO
Quota 135,33 sim
scala 1:200



PIANO QUARTO INFERIORE
Quota 135,33 sim
scala 1:200



PIANO QUINTO
Quota 137,39 sim
scala 1:200



PIANO QUARTO
Quota 135,33 sim
scala 1:200