

MAX WEBER PROGRAMME FOR POSTDOCTORAL STUDIES

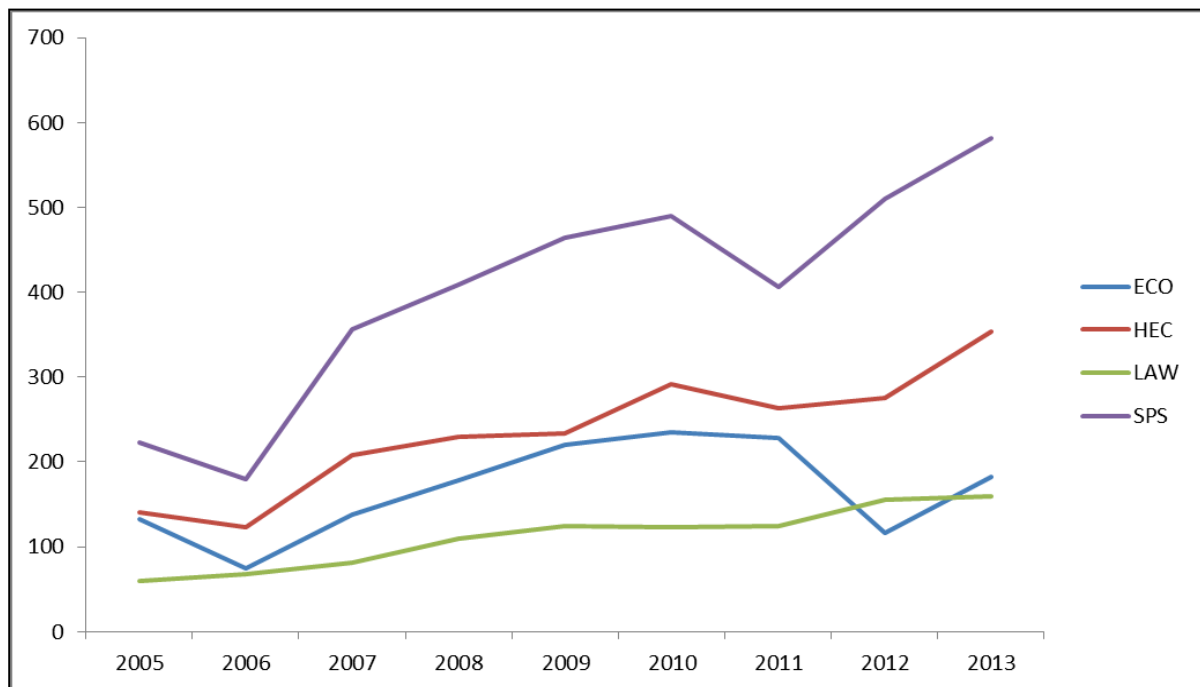
Applications to the Max Weber Programme and Max Weber Fellows from 2006 to 2013

Applications to the Max Weber Programme

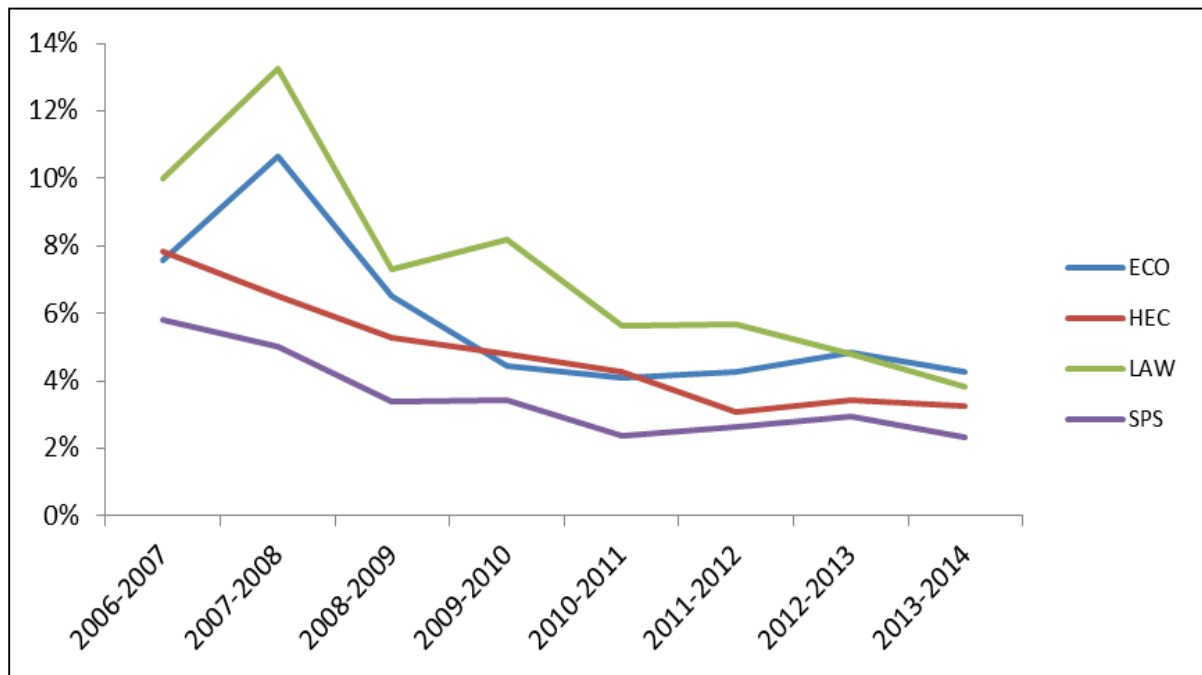
Over the seven rounds of applications from 2006 to 2013, a total of 8252 candidates have applied for a Max Weber Fellowship. The relative majority of candidates applied in Social and Political Sciences (43.8%), followed by History (25.7%), Economics (18.3%) and Law (12.2%). The share of male and female applicants has been 55% and 45% respectively.

In terms of geographical distribution, the majority of applications came from Europe (67.7%), followed by Asia (14,2%) and North America (10,8%), South and central America (3.7%), Africa (2.2%) and Oceania (1.5%). The total success rate has been decreasing over the years and in 2013 it was 2.87%.

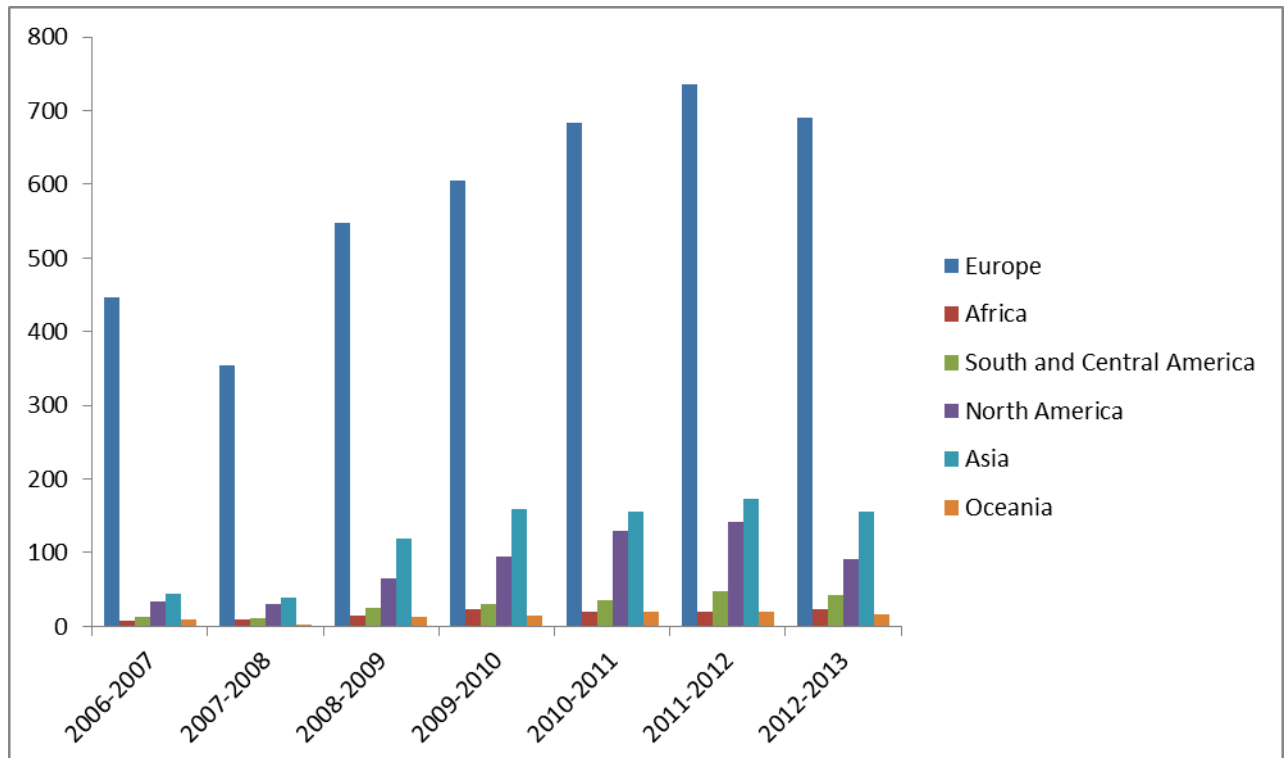
Max Weber Applications from 2006 to 2013 by department (absolute numbers)



Max Weber Applications from 2006 to 2013, success rate by department



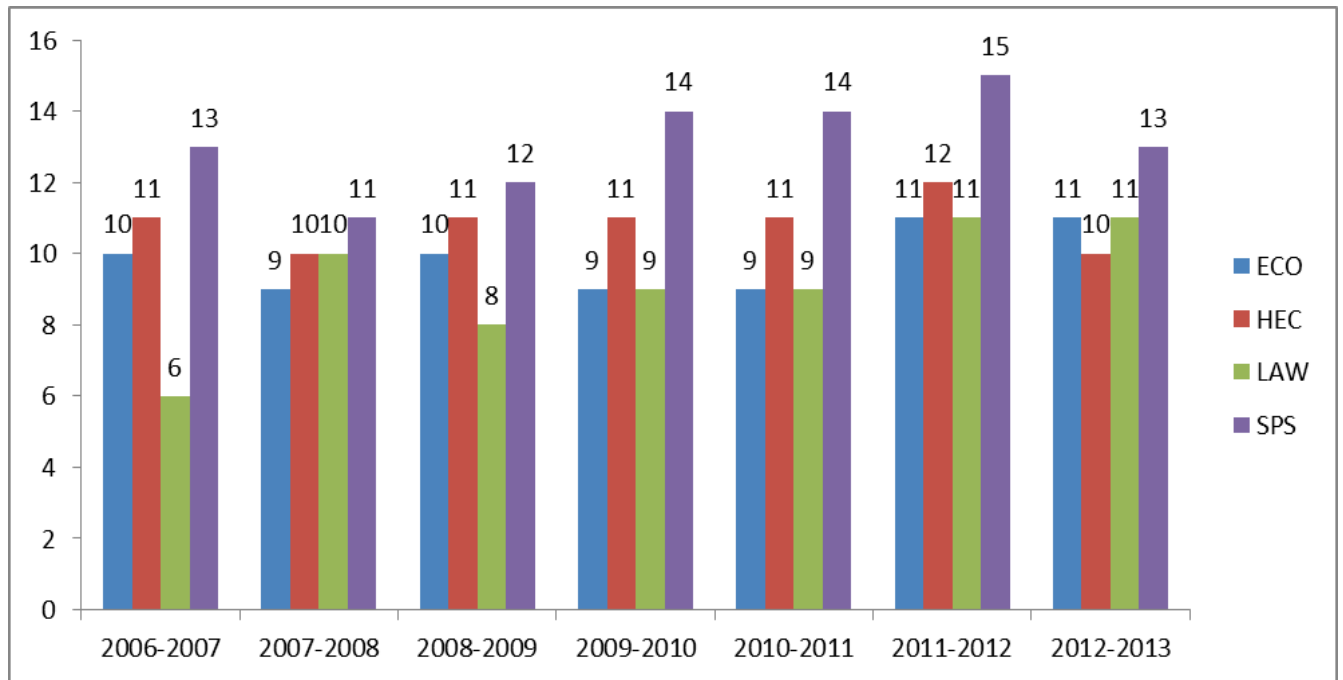
Max Weber Applications from 2006 to 2013 by region (absolute numbers)



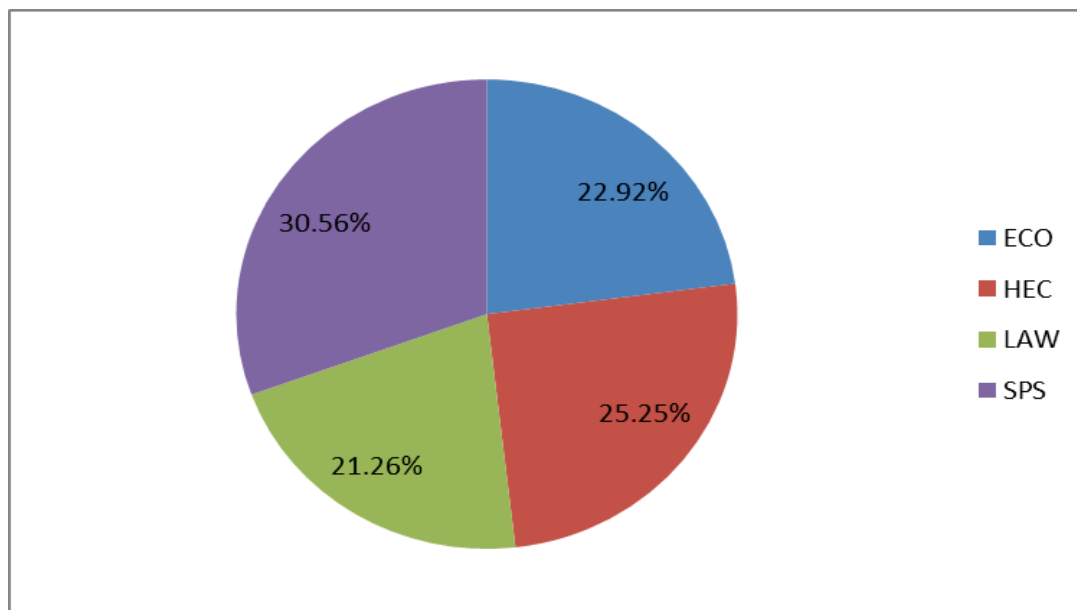
Max Weber Fellows

From 2006 to 2013, the MWP the Programme has hosted 301 Fellows, roughly 43 per year. During this period, the majority of fellows, 31%, were affiliated with the Social and Political Sciences department, 25% with History and 23% and 21% with the Economics and Law department, respectively. While the female-male shares of fellows have varied, the total female-male share is 45%-55% over the seven years.

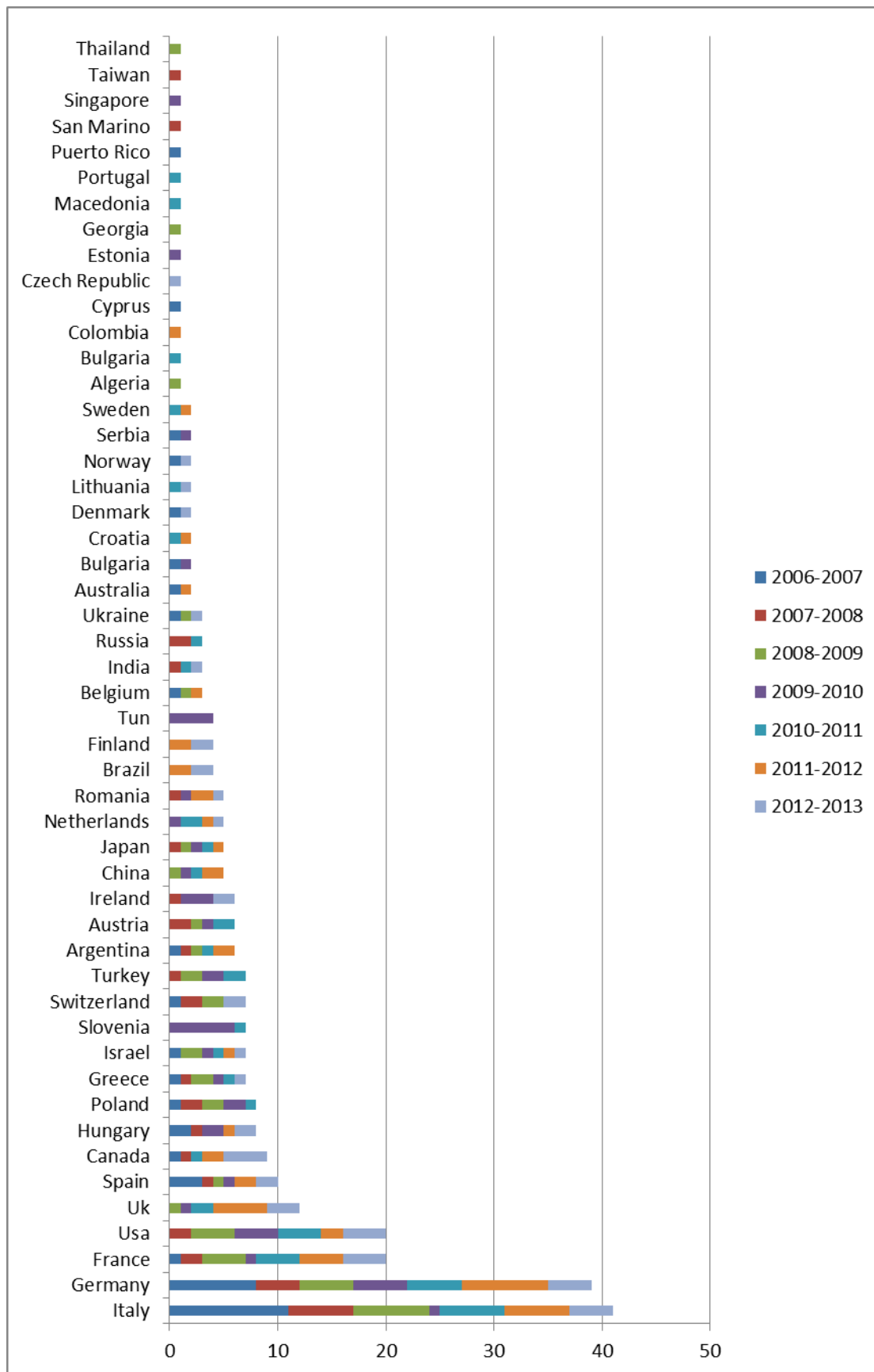
Max Weber Fellows from 2006 to 2013 by year and department (absolute numbers)



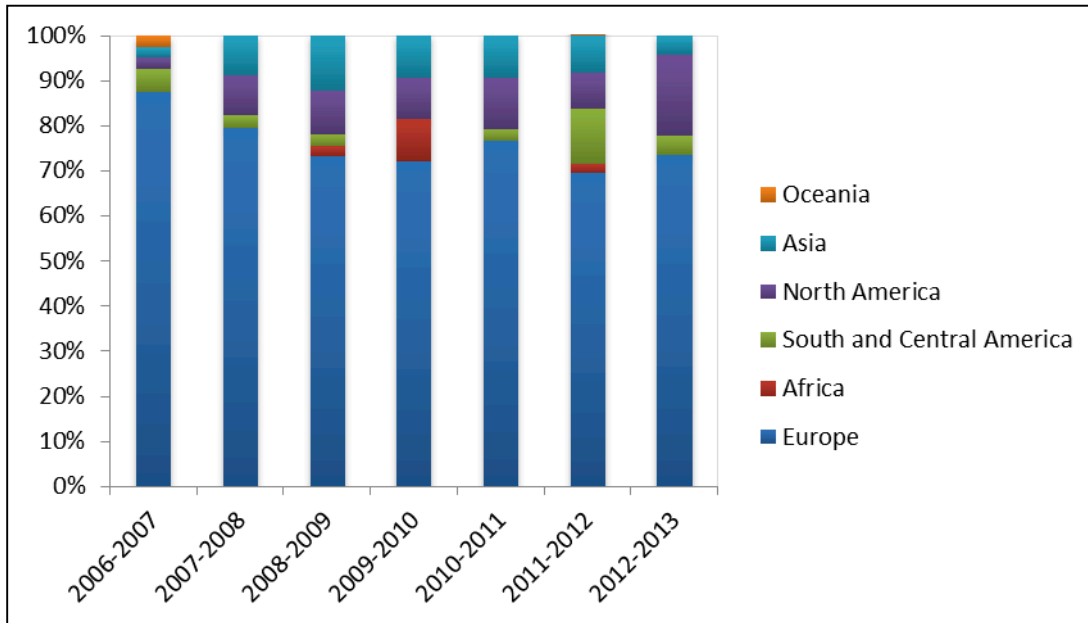
Max Weber fellows from 2006 to 2013 by department (percentages)



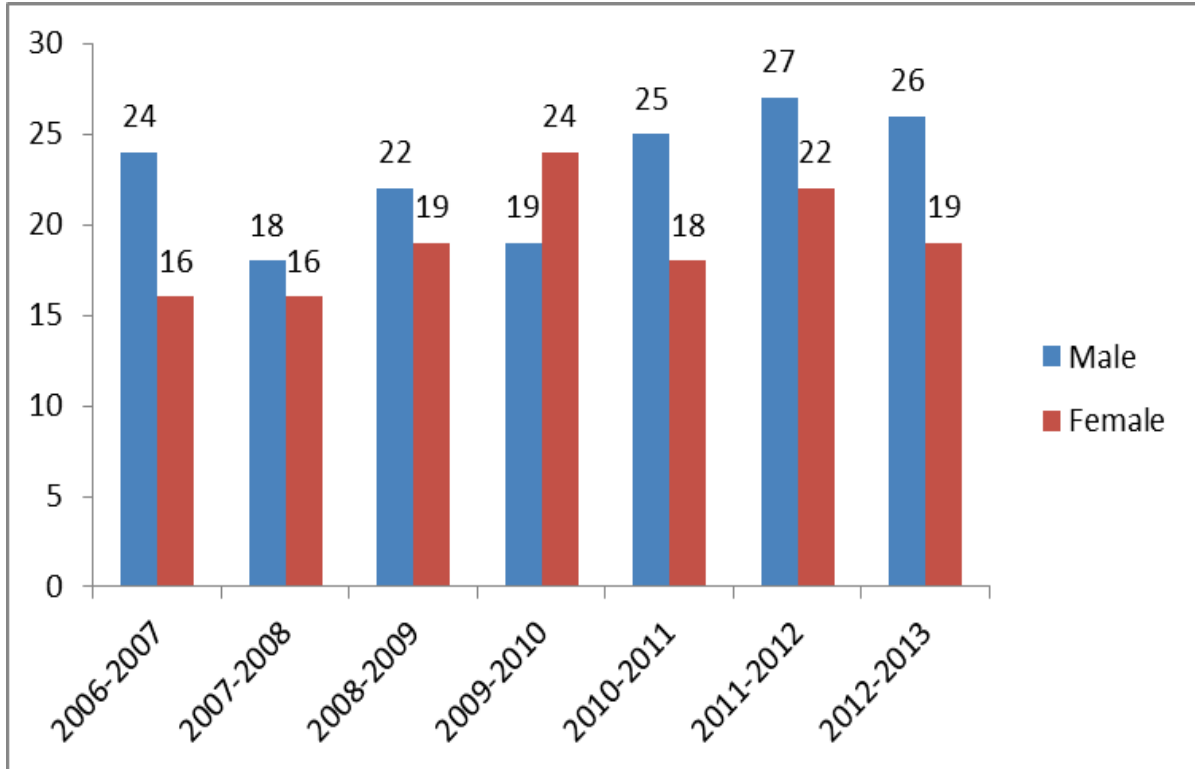
Max Weber Fellows from 2006 to 2013 by nationality (absolute numbers)



Max Weber Fellows from 2006 to 2013 by region (percentages)



Max Weber Fellows from 2006 to 2013 by gender (absolute numbers)



Max Weber Fellows from 2006 to 2013 by gender and department (percentages)

