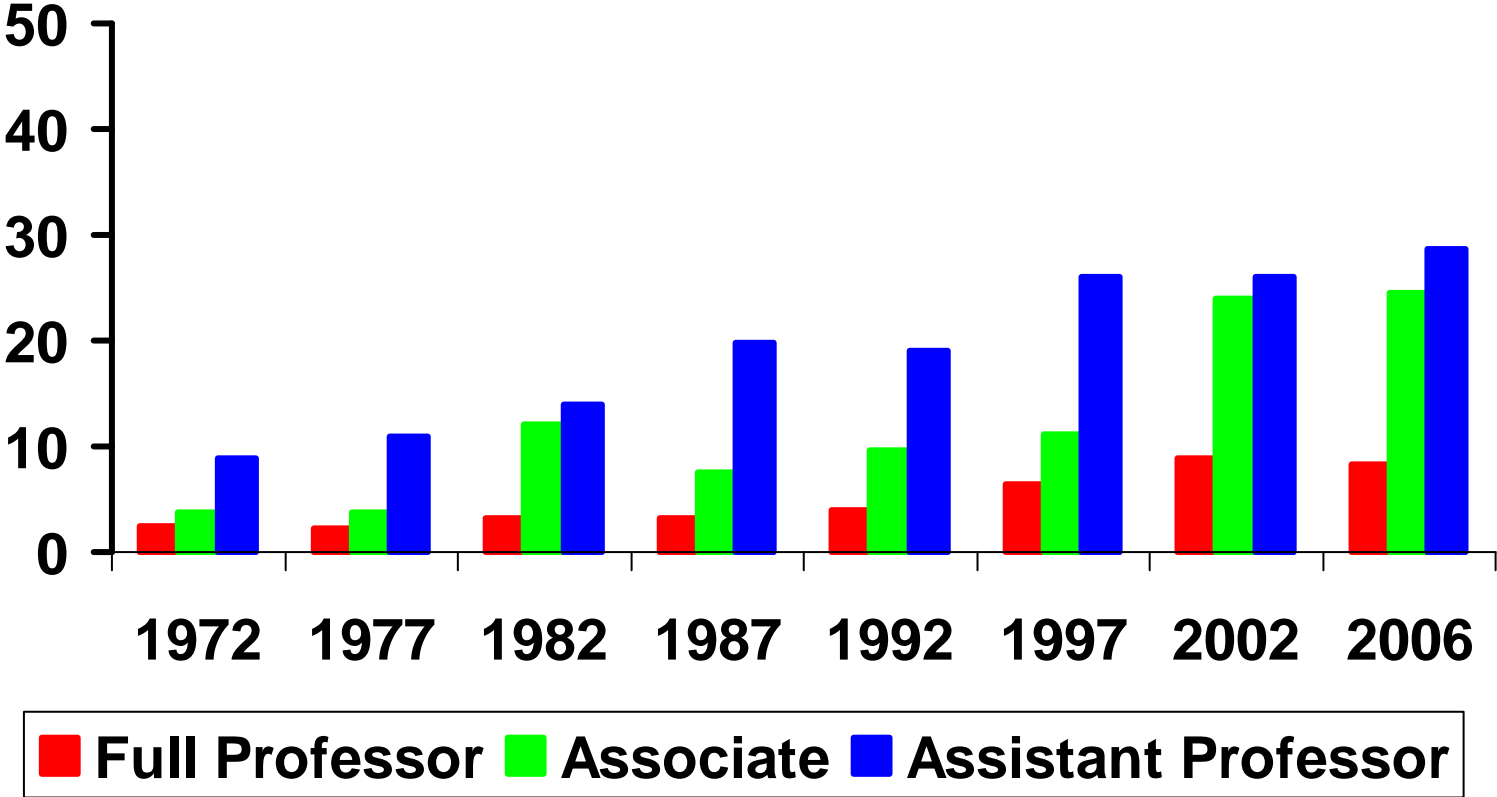


The American Economic Association's Committee on the Status of Women in the Economics Profession, CSWEP

- Since its inception CSWEP has conducted an annual survey on the status of women in academia.
- Sponsors sessions at the national and regional meetings
- Publishes a thrice annual newsletter with a focus on special topics (how to jump start your career, how to survive the interview process) www.cswep.org
- NSF supported mentoring project for junior faculty

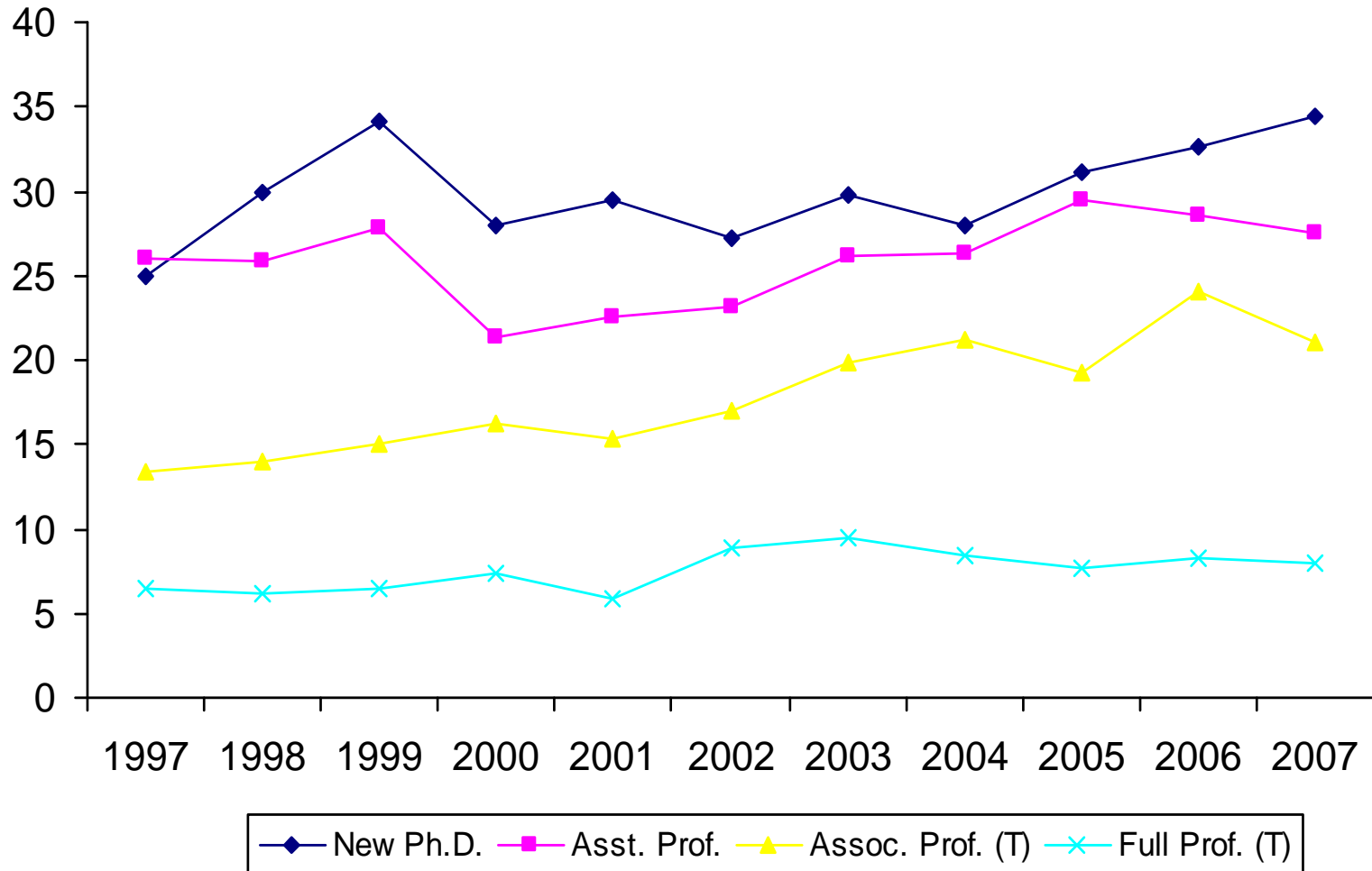
Percentage Female Faculty by Rank



CSWEP 36th Annual Report on the Status of Women in Academia

- For 2007 survey: response rate – 100% for the top twenty doctoral programs and 82.3% for all 124 Ph.D. programs surveyed.
- The fraction of tenured women associate professors in Ph.D. granting departments has fallen back from its high last year of 24.4% to 21% in 2007
- The fraction of new Ph.D.'s who are women continues its upward trend to 34.5 percent.
- However, in terms of what is in the pipeline, the fraction of 1st year doctoral students who are women has declined from its peak of 38.8% in 2000 to 32.7 percent in 2007.

Figure 1: Percentage of Economists in the Pipeline Who Are Female -- All Ph.D. Granting Departments



Students and the Job Market

<u>Students 2006-07</u>	<u>Women</u>	<u>Men</u>
First year	464	966
ABD	1,104	2,273
Ph.D. granted	314	597
 <u>Job Market 2006-07</u>		
<i>US based Jobs</i>	207	396
Academic PhD	80	192
Academic Other	51	63
Public Sector	25	49
Private Sector	51	92
<i>Foreign Jobs</i>	47	129
Academic	34	74
Nonacademic	13	55
<i>No Job Found</i>	9	20