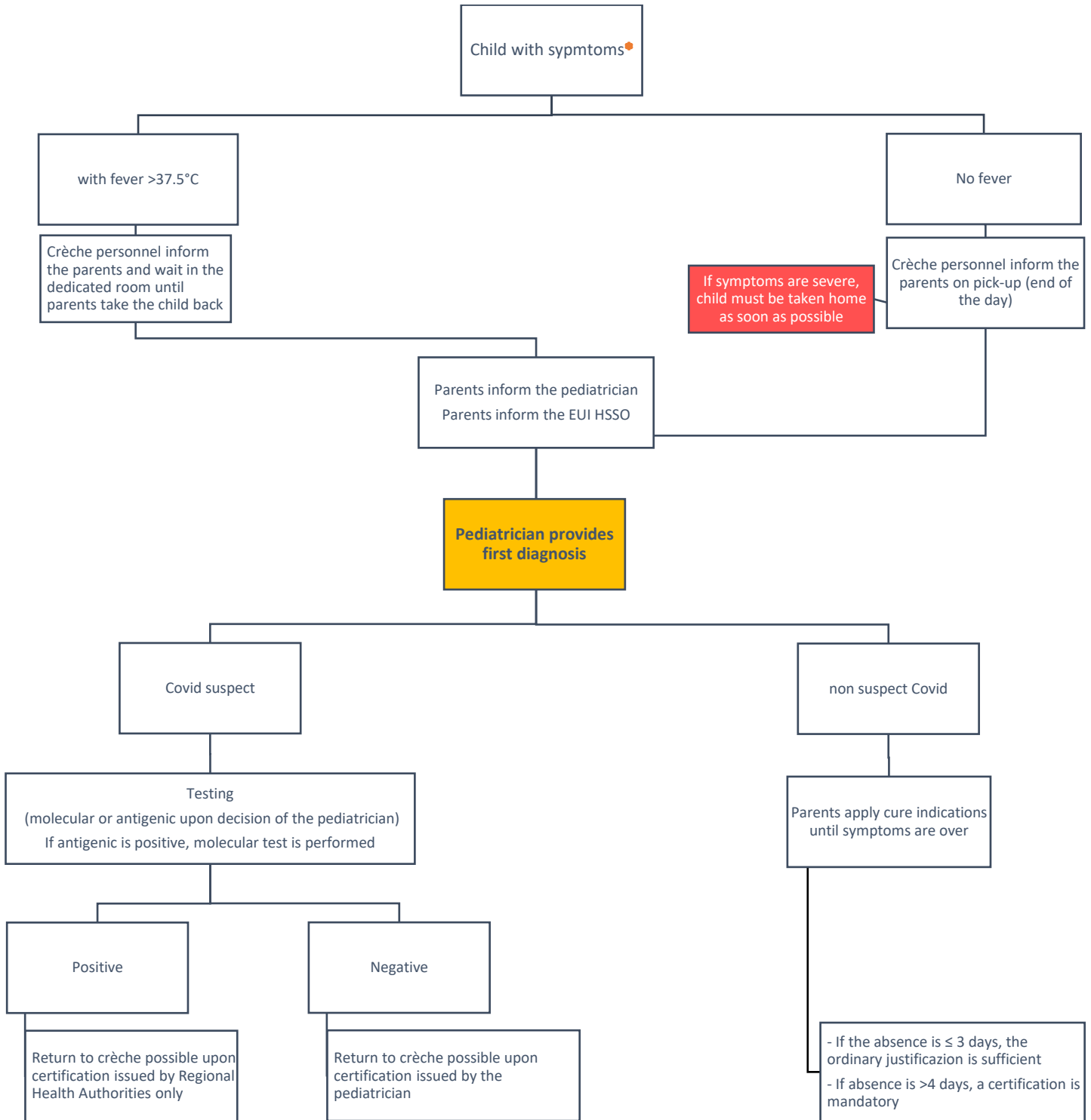


Covid19 Preventive protocol for EUI Crèche (update Jan 2021)



🌟 Covid Symptoms (even isolate symptoms) in statistic frequency order (being the fever the most frequent symptom often associated with cough).

1. Fever (>37,5 °C) (>80% cases) measured front and ear and if close to 37,5°C a second measurement is performed in 30 minutes;
2. Cough (38% cases)
3. Rhinorrhoea / nasal congestion (20.9% cases)
4. Gastrointestinal symptoms (nausea/ vomit/ diarrhea): repeated episodes in the day; (16% cases)

Other symptoms

5. Sore throat
6. Breathlessness/
7. Myalgia
8. Headache